

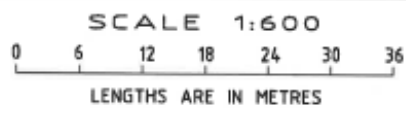
CAPE PATERSON
CARAVAN PARK
CA2018
PERMANENTLY RESERVED FOR THE
PROTECTION OF THE COASTLINE

SK
Shane C. Ramage
Licensed Surveyor

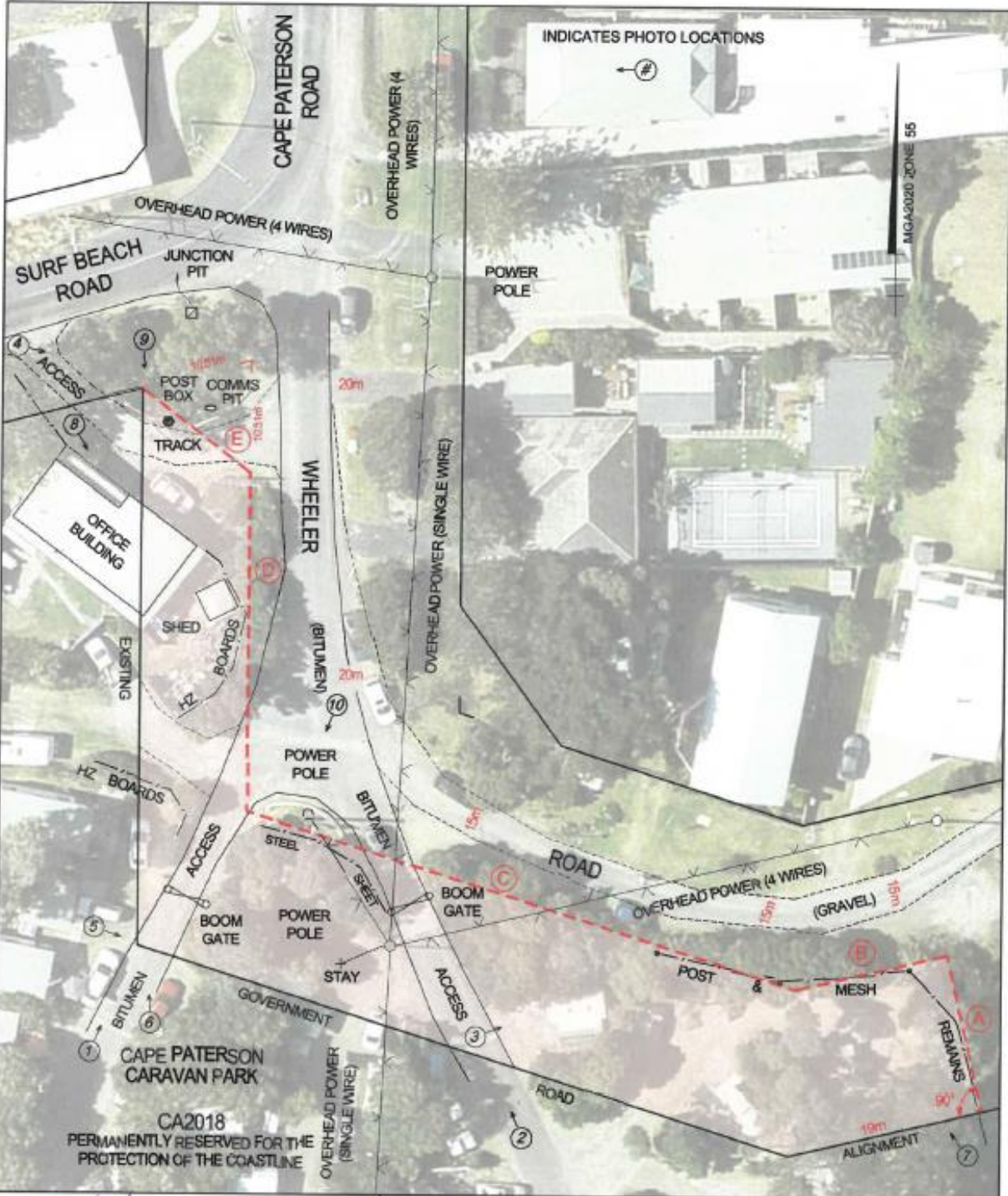
GOVERNMENT ROAD CLOSURE & RESERVATION
AT CAPE PATERSON CARAVAN PARK
PARISH OF WONTHAGGI

MEL-68649

SURVEYOR-GENERAL VICTORIA
DEPARTMENT OF ENVIRONMENT,
LAND, WATER AND PLANNING



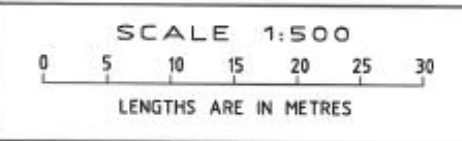
PLAN No.
W/04.12.18B
SHEET 1 OF 1




 Shane C. Ramage
 Licensed Surveyor

**GOVERNMENT ROAD CLOSURE & RESERVATION
 AT CAPE PATERSON CARAVAN PARK**
 PARISH OF WONTHAGGI
 MEL-68649

SURVEYOR-GENERAL VICTORIA
 DEPARTMENT OF ENVIRONMENT,
 LAND, WATER AND PLANNING



PLAN No.
W/04.12.18A
 SHEET 1 OF 1