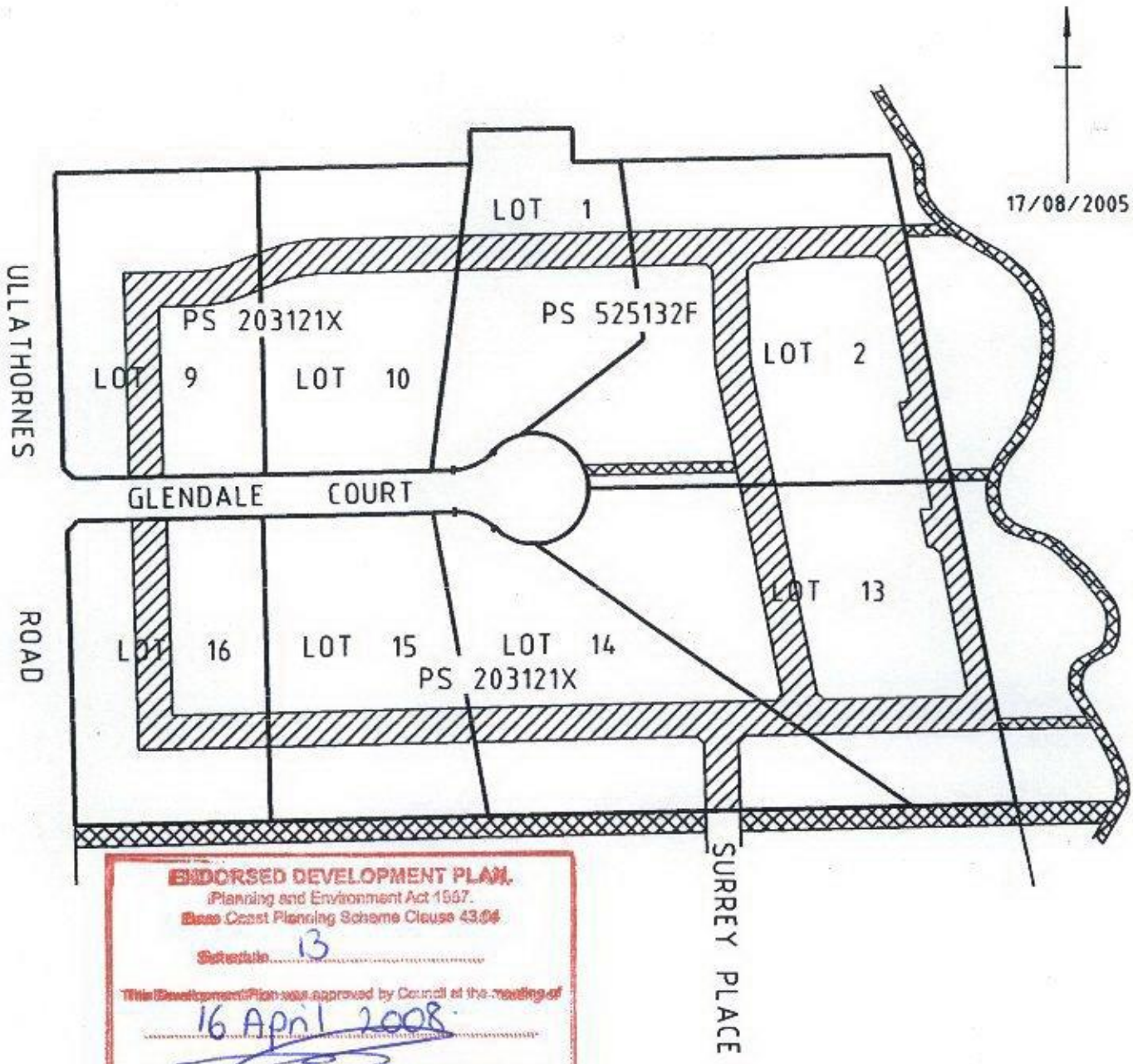




17/08/2005



ENDORSED DEVELOPMENT PLAN
 (Planning and Environment Act 1997.
 Bass Coast Planning Scheme Clause 43.04
 Schedule 13
 This Development Plan was approved by Council at the meeting of
 16 April 2008
 For and on behalf of the Responsible Authority
 Date 1/5/08

ROAD LAYOUT AND PEDESTRIAN LINKS DPO 13 BASS COAST PLANNING SCHEME

-  ROAD LAYOUT
-  PEDESTRIAN LINKS

SCALE 30 0 30 60 90 120 1:3000
 LENGTHS ARE IN METRES
 (SHEET SIZE A4)

BW BEVERIDGE WILLIAMS & CO PTY LTD
 ACM 006 197 235 ADM 44 622 025 684
 SURVEYORS ENGINEERS PLANNERS
 ENVIRONMENTAL CONSULTANTS
 PO BOX 2205 CAULFIELD JUNCTION 3161 95264444
 PO BOX 1465 BALLARAT MAIL CENTRE 3384 53313877
 PO BOX 161 LEONGATHA 3953 56622630
 PO BOX 129 MONTHAGGI 3995 56721505
 PO BOX 1916 TRARALGON 3844 51760374

REF. NO. 2694