

HERITAGE PLACE

NAME OF PLACE: 'SHIRWELL'

ADDRESS/LOCATION OF PLACE: 8 Western Street INVERLOCH

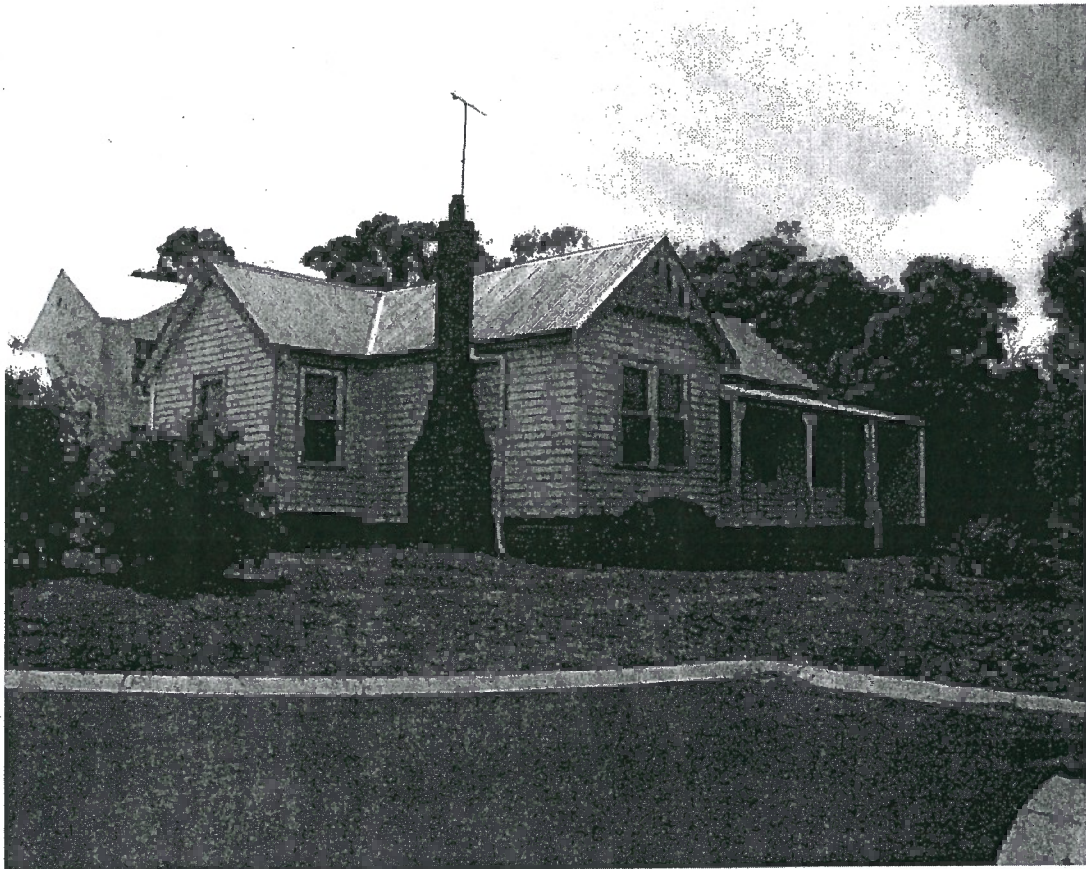
STUDY NUMBER: 171

HERITAGE OVERLAY NUMBER: HO102

LOCAL GOVERNMENT AREA: Bass Coast Shire

PARISH: PARISH OF KIRRAK

SIGNIFICANCE RATING: Local



'Shirwell', 8 Western Street, Inverloch.

Image Date: March 2002

EXTENT OF LISTING:

Whole allotment.

'SHIRWELL'

Heritage Overlay No HO102

PropertyNo

File Number

Heritage Study No 171

Heritage Grading

HPD Number 167

HI Number

VHR Number

Other Names/s

Precinct

Group Number

Extra Files

Location 8 Western Street INVERLOCH

PARISH OF KIRRAK

COUNTY OF BULN BULN

INVERLOCH (T)

Planning Authority

Ward Townsend

Access Description

Map Number

0

Map Scale 1:100000

Latitude

Longitude

UMG Zone

Easting

Northing

Location Validity

Spatial Accuracy

Extent of Listing

Whole allotment.

Published Extent of Listing

Significance Local

Statement of Significance

The house at 8 Western Street is of local historic and aesthetic significance. It is historically significant as part of the original landholding of one of the earliest settlers in Inverloch, Samuel Laycock. Built as a holiday home by local farmer, John Western, after who the street was named, it is demonstrative of the aspirations and means of the first settlers in the area, and provides evidence of an early phase of Inverloch's settlement and attraction as a coastal holiday place. The house is aesthetically significant as a largely intact example of an Edwardian-styled villa.

Gazettal Details

Permit Exemptions

Exemptions Policy

Assessment Against Criteria

AHC A.4 Importance for association with events, developments or cultural phases which have had a significant role in the human occupation and evolution of the nation, State, region or community.

Date Assessed 10/08/2004 Assessed By F Woodhouse

Comparisons

Rare Assessment

Intact Assessment

Good

Include in VHR Include in RNE Include in Local Planning Scheme No Recommendations for Inclusions

Recommended Management

If a fence is erected it should be of an appropriate design (e.g. timber picket or woven wire).
Investigate original paint colours when due for a repaint.

Heritage Act Categories

Heritage Item Groups

Heritage Item Categories

Title Details

Architect/Designers

Unknown

Builders/Makers

Unknown

'SHIRWELL'

Heritage Overlay No HO102

PropertyNo

File Number

Heritage Study No 171

Heritage Grading

HPD Number 167

HI Number

VHR Number

Other Names/s

Precinct

Group Number

Extra Files

Physical Description

'Shirwell', 8 Western Street Inverloch, is a single-storey double-fronted Edwardian weatherboard villa, L-shaped in plan and with a gabled corrugated galvanised steel roof and a skillion roofed verandah. The front elevation has a projecting gabled bay with a strapped, timber gable screen and paired timber-framed double-hung sash windows. A corbelled red-brick chimney abuts the side of the gabled bay. A projecting gabled side wing is possibly an early addition. The front elevation contains an aluminium-framed window and the end of the verandah has been infilled. Other alterations include the skillion roofed addition at the rear and red-brick steps and handrail to the front of the verandah.

Physical Condition and/or Archaeological Potential

Good

Usage Residence/holiday house.

Associated People

Samuel Laycock

Historical Notes

The first leasehold in South West Gippsland was obtained by George Raff in 1842, but this was later absorbed into George Black's Tarwin Meadows Run in 1851. Black later cleared the land for grazing and farming. When cattle runs were opened for farming by the Land Act of 1869, selections made in South West Gippsland included Inverloch.

The seaside town of Inverloch was first named Anderson's Inlet after the first permanent European settler in Western Port, Samuel Anderson. A lowland Scot, Anderson had worked for the Van Diemen's Land Company until he sailed across Bass Strait in 1835 and settled on the Bass River. Here he successfully grew wheat and encouraged his brothers from Scotland to join him. The township of Anderson Inlet was proclaimed in 1886, and renamed Inverloch in 1889, presumably in honour of Sir Henry Brougham Loch, Governor of Victoria from 1884-89. The nearby township of Loch, was also named after the Governor. The name also derives from the Gaelic 'inver' meaning 'at the entrance to' and 'loch', meaning 'lake'.

Inverloch developed as a fishing village and as a small-ship port to service the farms being established around the Inlet. By the late nineteenth century it was established as both a seaside resort and a port for transporting local produce to Melbourne. In the 1890s, when coalmines were opened in Korumburra, Outtrim and Jumbunna, Inverloch was the nearest seaside holiday resort. When the State Coal Mine opened at Wonthaggi in 1909, the coal was initially shipped to Melbourne from Inverloch until the Nyora-Wonthaggi line was opened in 1910. Many of the mine-workers lived in Inverloch, and cycled to Wonthaggi every day. When the mine closed in 1968, some of the miners' cottages were transported to Inverloch as holiday homes.

This house is situated on land originally part of the much larger allotment 4 in the Parish of Kirrak, which was originally sold to Samuel Isaac Laycock on 7 July 1886. Part of this was subsequently sold to Englishman, John Western, an early settler in the Kardella district, after whom the street was named. Once firmly established as a farmer, Western built this summer house on the site in the c.1920s, which he named 'Shirwell' in reference to his former home in England.

Historic Themes

Thematic Environmental History

13.2 Coastal Towns and 13.3 Tourist Resorts: The coastal town of Inverloch, established on Anderson Inlet in 1886, became a popular resort in the late nineteenth century with local miners, and from 1909 with miners from Wonthaggi. When roads and motor transport became more accessible in the 1930s and 1940s, it became popular with holidaymakers from Melbourne. Families enjoyed holidays of four weeks or more in the same rented house, and many families stayed in the area until Easter. Many holiday residents have retired to Inverloch permanently.

Listings

References

Author	Title	Year	ShelfLocation
Department of Lands and Survey	Parish plan of Kirrak, Counties of Mornington and Bourke.		
E P Brewster (ed.)	Looking Back at Inverloch	1988	
Inverloch Historical Society Inc.	Anderson Inlet Inverloch: A Short A-Z History	1997	
Les Blake	Place Names of Victoria	1974	
Les Blake	Vision & Realisation, Vol. 3	1973	

'SHIRWELL'

Heritage Overlay No HO102
PropertyNo
File Number
Heritage Study No 171
Heritage Grading

HPD Number 167

HI Number

VHR Number

Other Names/s

Precinct

Group Number

Extra Files

Norm Deacon, Inverloch Historical Society, pers comm.		2004
---	--	------

Norman R Deacon (ed.)	Anderson Inlet Inverloch: Inverloch and District Identities and Pioneers	2000
-----------------------	--	------

R V Billis and A S Kenyon	Pastoral Pioneers of Port Phillip	1974
---------------------------	-----------------------------------	------

Thomas Horton and Kenneth Morris	The Andersons of Western Port	1983
----------------------------------	-------------------------------	------

Conservation Plans

Owner Type

Section 32 Recommendation

Owners/Occupants/Managers

Other Notes

Application Detail

Adviser Comments

Planning Scheme Amendments

Overlay Controls

Planning Scheme Schedule

External Paint Controls? No

Included in Vic Heritage Register? No

Internal Alteration Controls? No

Prohibited uses may be permitted? Yes

Tree Controls? No

Name of incorporated plan No

Outbuildings/fences not exempt? No

Aboriginal Heritage Place? No