

# HERITAGE PLACE

**NAME OF PLACE:** NEWHAVEN COLLEGE

**ADDRESS/LOCATION OF PLACE:** Boys Home Road NEWHAVEN

**STUDY NUMBER:** 135

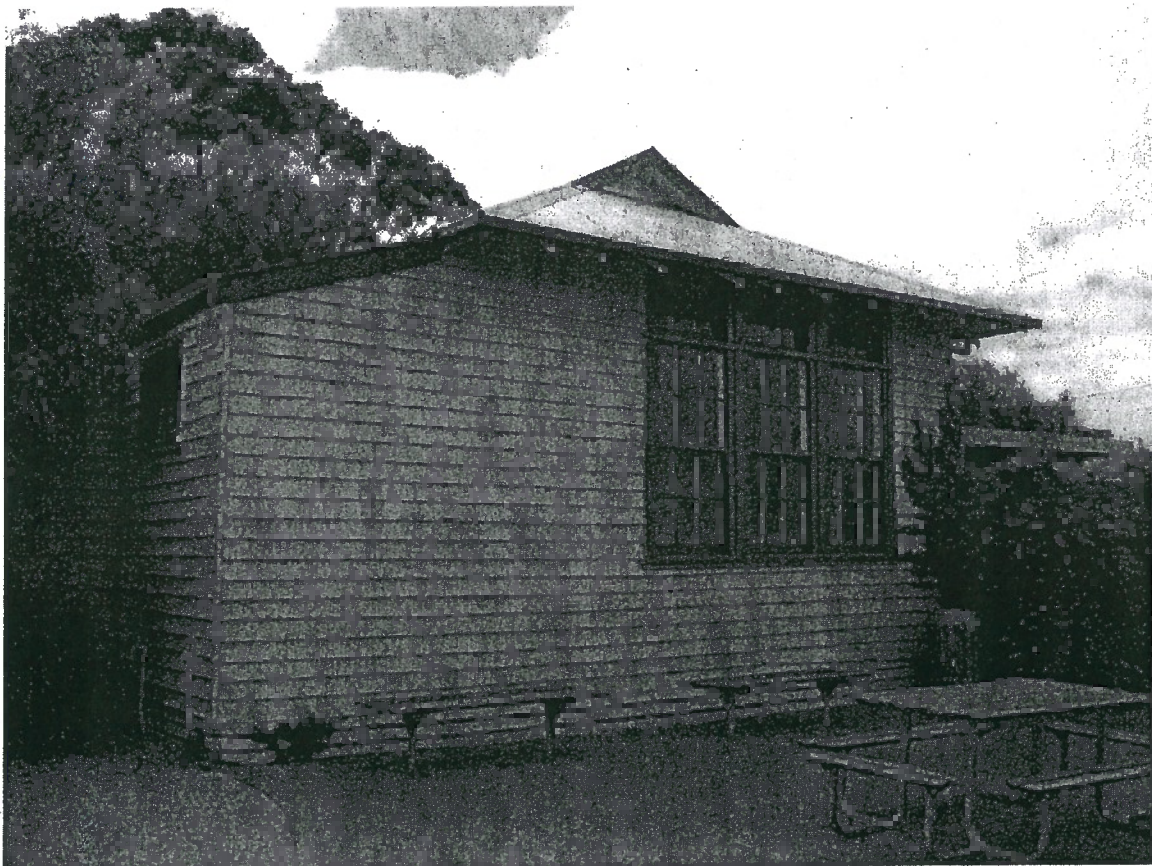
**HERITAGE OVERLAY NUMBER:** HO125

---

**LOCAL GOVERNMENT AREA:** Bass Coast Shire

**PARISH:** PARISH OF PHILLIP ISLAND

**SIGNIFICANCE RATING:** Local



Newhaven College, Boys Home Road, Newhaven

**Image Date:** December 2003

**EXTENT OF LISTING:**

From the front boundary and nominally 20 metres all around the Edwardian school building.

# NEWHAVEN COLLEGE

Heritage Overlay No HO125  
PropertyNo  
File Number  
Heritage Study No 135  
Heritage Grading

HPD Number 41

HI Number

VHR Number

Other Names/s

Precinct

Group Number

Extra Files

Location Boys Home Road NEWHAVEN

PARISH OF PHILLIP ISLAND

COUNTY OF MORNINGTON

NEWHAVEN (T)

Planning Authority

Ward Anderson

Access Description

Map Number

0

Map Scale 1:100000

Latitude

Longitude

UMG Zone

Easting

Northing

Location Validity

Spatial Accuracy

Extent of Listing

From the front boundary and nominally 20 metres all around the Edwardian school building.

Published Extent of Listing

Significance Local

Statement of Significance

The Edwardian schoolhouse at Newhaven College is of local historic and aesthetic significance. Originally erected as the St Clair Primary School in 1914, and relocated to Wonthaggi in 1965, it demonstrates the pattern of closure and relocation which characterised the establishment of schools in the South West Gippsland region during the twentieth century. Aesthetically it is a representative example of a substantially intact rural Edwardian timber schoolhouse, of which there are a number of examples in the municipality.

Gazettal Details

Permit Exemptions

Exemptions Policy

Assessment Against Criteria

AHC G1: Importance as a place highly valued by a community for reasons of religious, spiritual, symbolic, cultural, educational or social associations.

Assessed 08/08/2004 Assessed By F Woodhouse

Comparisons

Rare Assessment

Intact Assessment

Good

Include in VHR  Include in RNE  Include in Local Planning Scheme   No Recommendations for Inclusions

Recommended Management

Investigate original external paint colours

Heritage Act Categories

Heritage Item Groups

Heritage Item Categories

Title Details

Physical Description

Newhaven College comprises a collection of various school buildings including an Edwardian single-storey weatherboard schoolhouse with a gambrel main roof and a skillion roofed side wing. The roof is clad in corrugated galvanised steel and has exposed rafters at the eaves. The west elevation contains a tripartite, multi-paned timber-framed double-hung sash window with fanlights. The east elevation contains a modern fixed sash window and there is a non-original entry porch to the skillion-roofed wing. The gablet to the main roof contains non-

# NEWHAVEN COLLEGE

Heritage Overlay No HO125

PropertyNo

File Number

Heritage Study No 135

Heritage Grading

HPD Number 41

HI Number

VHR Number

Other Names/s

Precinct

Group Number

Extra Files

original fibro-cement sheet infill.

Physical Condition and/or Archaeological Potential

Good

Usage School.

Associated People

Historical Notes

Newhaven College opened in 1980 on land formerly used as a recreational ground by the adjacent St Paul's Training School. Expansion of the school's infrastructure was an urgent priority. Wonthaggi Primary School was being rebuilt at this time, and the old Arts/Craft room building there became available to Newhaven College for only the cost of its removal. This building had originally been constructed as the St Clair Primary School in 1914 at a cost of £367. Renamed Lance Creek School in 1915, the school continued until 1965, when low enrolments resulted in it being unstaffed. The 1914 school building was subsequently relocated to Wonthaggi Primary School.

Historic Themes

Thematic Environmental History

14.5 Education: Education was an important aspect of the settlement of a district. The importance of education and community activity is emphasised by the continued community use of the old school house, teacher's cottage and hall by the local community.

Listings

References

Author

Title

Year ShelfLocation

Kenneth Morris,

Our School by the Sea

Les Blake

Vision and Realisation, Volume 3.

1973

Conservation Plans

Owner Type

Section 32 Recommendation

Owners/Occupants/Managers

Other Notes

Application Detail

Adviser Comments

Planning Scheme Amendments

Overlay Controls

Planning Scheme Schedule

External Paint Controls? No

Included in Vic Heritage Register? No

Internal Alteration Controls? No

Prohibited uses may be permitted? Yes

Tree Controls? No

Name of incorporated plan No

Outbuildings/fences not exempt? No

Aboriginal Heritage Place? No