

HERITAGE PLACE

NAME OF PLACE: FORMER BANK

ADDRESS/LOCATION OF PLACE: 1 McBride Avenue WONTHAGGI

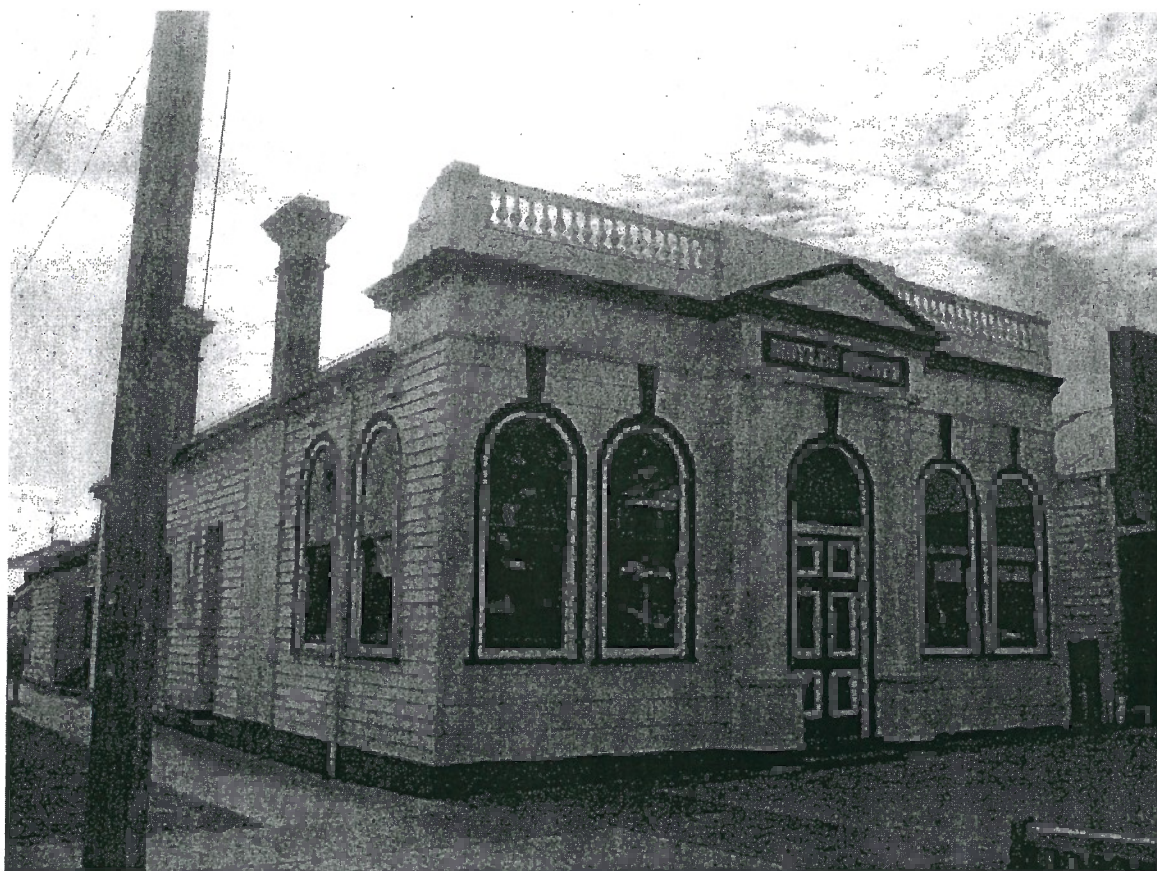
STUDY NUMBER: 535

HERITAGE OVERLAY NUMBER: HO164

LOCAL GOVERNMENT AREA: Bass Coast Shire

PARISH: PARISH OF WONTHAGGI

SIGNIFICANCE RATING: Local



Former Bank, 1 McBride Avenue, Wonthaggi

Image Date: December 2003

EXTENT OF LISTING:

Whole allotment.

FORMER BANK

Heritage Overlay No **HO164**
PropertyNo
File Number
Heritage Study No **535**
Heritage Grading

HPD Number 109

HI Number

VHR Number

Other Names/s

Precinct

Group Number

Extra Files

Location 1 McBride Avenue WONTHAGGI

PARISH OF WONTHAGGI

COUNTY OF MORNINGTON

WONTHAGGI (T)

Planning Authority

Ward Hovell

Access Description

Map Number

0

Map Scale 1:100000

Latitude

Longitude

UMG Zone

Easting

Northing

Location Validity

Spatial Accuracy

Extent of Listing

Whole allotment.

Published Extent of Listing

Significance Local

Statement of Significance

The former bank, McBride Avenue, Wonthaggi, is of local historic and aesthetic significance. It is of historic significance as the first purpose-built bank on the site and which serviced the town. Aesthetically it is a fine and substantially intact, internally and externally, example of a timber commercial building with classical-revival detailing. Buildings of this type are rare in the municipality.

Gazettal Details

Permit Exemptions

Exemptions Policy

Assessment Against Criteria

AHC A.4 Importance for association with events, developments or cultural phases which have had a significant role in the human occupation and evolution of the nation, State, region or community.

AHC E.1 Importance for a community for aesthetic characteristics held in high esteem or otherwise valued by the community

Date Assessed 13/08/2004 Assessed By F Woodhouse

Comparisons

Rare Assessment

Intact Assessment

Good

Include in VHR Include in RNE Include in Local Planning Scheme No Recommendations for Inclusions

Recommended Management

Investigate original external paint colours when due for a repaint

Signage should be restricted to the existing amount

Second storey additions should not be permitted

Replace aluminium-framed windows with timber-framed windows of appropriate historic design.

Original internal joinery to the front rooms should be retained and maintained.

Heritage Act Categories

Heritage Item Groups

Heritage Item Categories

Heritage place

Commercial

Bank

Title Details

Physical Description

FORMER BANK

Heritage Overlay No HO164

PropertyNo

File Number

Heritage Study No 535

Heritage Grading

HPD Number 109

HI Number

VHR Number

Other Names/s

Precinct

Group Number

Extra Files

The former bank, McBride Avenue, Wonthaggi, is a single-storey block-fronted weatherboard building with a balustraded parapet. The symmetrical facade contains a pedimented entrance supported by engaged pilasters flanked on either side by a pair of round-arched timber double-hung sash windows with expressed keystone motifs. The gambrel corrugated galvanised steel roof is penetrated by slender red-brick chimneys with rendered caps. The side elevation contains two recessed entrances, each containing a panelled timber door. The wider of the two entrances is fitted with a wrought-iron gate and a cast iron valance and has a tessellated tile floor. It is flanked by a pair of square-headed, timber-framed double-hung sash windows with fanlights. A hipped roof rear wing contains aluminium-framed windows and has skillion roofed additions. The former bank interior features original joinery.

Physical Condition and/or Archaeological Potential

Good

Usage Residence.

Associated People

Historical Notes

Wonthaggi was established as a mining town in 1909 to supply the Victorian Railways with black coal, and thus make Victoria independent of the privately owned New South Wales coalfields, the previous source of coal for the railways. The decision to proceed with mining coal from the Powlett Coalfield was prompted by the coal miners in New South Wales strike in 1909. When established, the coal was worked by the State Coal Mine from the Dudley and Kirrak Basins. The township of Wonthaggi is located on a ridge between the two basins. Initially the miners lived in a tent city; by 1910 the Government had laid out a model township. By 1921 Wonthaggi had a population of 5,000, making it one of the largest towns in Gippsland at the time. Wonthaggi's population peaked at around 12,000 in the mid-1920s when the mine was at its operational peak. The township was divided into commercial and residential areas. Its infrastructure provided for housing, water, churches, schools, and other social facilities.

The former bank building is located on Allotment 1, Section I of the Township of Wonthaggi, which was sold to the Bank of Victoria in the initial land sales, which began in 1910. Four banks had been established in the town by 1912. A branch of the Bank of Victoria is listed at Wonthaggi in the commercial directories from 1911 onwards. The first manager was Mr George S Symonds. The former Bank of Victoria is thought to have been in a small temporary timber building constructed on this site and later moved to Merrin Crescent. The existing bank building is believed to have been erected in 1915. The Bank of Victoria was renamed the Commonwealth Banking Company of Sydney in 1935. The Wonthaggi branch was closed in 1944 and the building was then purchased by the Moyle family. It has since been used as offices, a dress shop and dressmakers. It is of interest to note that, in an article in the local 'South Gippsland Sentinel Times' dated 25 October 1973, notable Australian architect, Sir Roy Grounds, when speaking at the Wonthaggi Lions Club, had argued that the former bank must be classified by the National Trust. To date, it has not been classified.

Historic Themes

Thematic Environmental History

13.1 Larger Centres: Wonthaggi, the site of the former State Coal Mine, was established to supply coal to the Victorian Railways and eventually other industries. Today it is a flourishing town and the largest shopping centre in South Gippsland. Wonthaggi's commercial area includes an extensive range of shops. As a tourist destination, the area supports hotels, motels, caravan parks and accommodation for holiday rentals. Nearby attractions include Cape Paterson and its fine surf beaches and the adjoining Bunurong Marine Park. The State Coal Mine and Mining Museum, now a tourist attraction, is managed by Parks Victoria.

Listings

References

Author	Title	Year	Shelf	Location
Bruce Trethowan	A Study of Banks in Victoria	1976		
Department of Lands and Survey	Parish Plan of Township of Wonthaggi, Parish of Wonthaggi, County of Mornington			
John Bordignon, pers comm.		2004		
John M Coghlan	The State Coal Mine and Wonthaggi 1909-1968	1979		
Sands & McDougalls	Sands & McDougalls Directories	1910		
		-15		
South Gippsland and Sentinel Times	Moyle's Must be Classified	1973		
T.J. Gannon (ed.)	Wonthaggi and District, Past and Present	1934		

Conservation Plans

Owner Type

FORMER BANK

Heritage Overlay No HO164

PropertyNo

File Number

Heritage Study No 535

Heritage Grading

HPD Number 109

HI Number

VHR Number

Other Names/s

Precinct

Group Number

Extra Files

Section 32 Recommendation

Owners/Occupants/Managers

Other Notes

Application Detail

Adviser Comments

Planning Scheme Amendments

Overlay Controls

Planning Scheme Schedule

External Paint Controls? Yes

Included in Vic Heritage Register? No

Internal Alteration Controls? Yes

Prohibited uses may be permitted? Yes

Tree Controls? No

Name of incorporated plan No

Outbuildings/fences not exempt? No

Aboriginal Heritage Place? No