

HERITAGE PLACE

NAME OF PLACE: WONTHAGGI HOTEL

ADDRESS/LOCATION OF PLACE: 2 McBride Avenue WONTHAGGI

STUDY NUMBER: 533

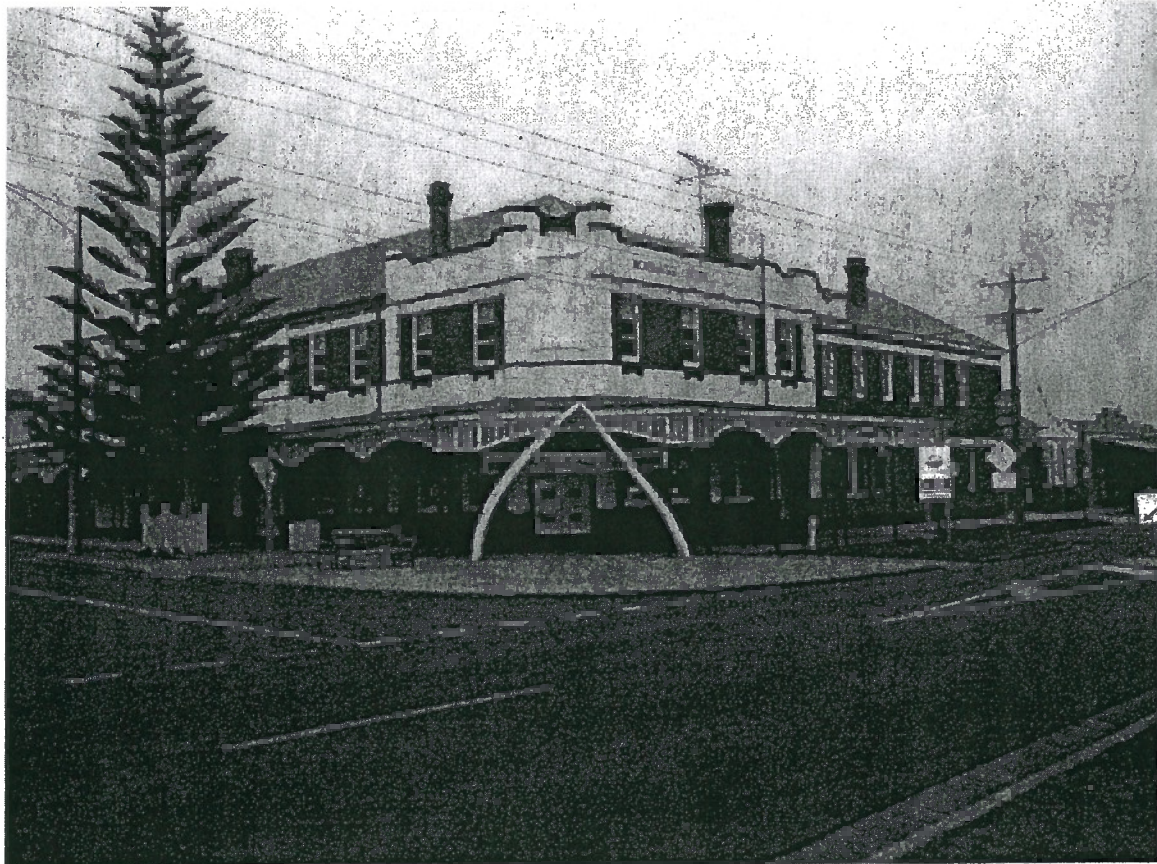
HERITAGE OVERLAY NUMBER: HO165

OTHER NAME/S OF PLACE: FORMER TABERNERS HOTEL

LOCAL GOVERNMENT AREA: Bass Coast Shire

PARISH: PARISH OF WONTHAGGI

SIGNIFICANCE RATING: Local



Wonthaggi Hotel, 2 McBride Avenue, Wonthaggi

Image Date: July 2004

EXTENT OF LISTING:

Whole allotment.

WONTHAGGI HOTEL

Heritage Overlay No **HO165**
PropertyNo
File Number
Heritage Study No **533**
Heritage Grading

HPD Number 209 HI Number VHR Number

Other Names/s FORMER TABERNERS HOTEL

Precinct Group Number

Extra Files

Location 2 McBride Avenue WONTHAGGI
PARISH OF WONTHAGGI COUNTY OF MORNINGTON

WONTHAGGI (T)
Planning Authority Ward Hovell

Access Description

Map Number 0 Map Scale 1:100000 Latitude Longitude

UMG Zone Easting Northing

Location Validity Spatial Accuracy

Extent of Listing

Whole allotment.

Published Extent of Listing

Significance Local

Statement of Significance

The former Taberner's Hotel, now the Wonthaggi Hotel, is of local historic, social and aesthetic significance. It is of historic significance as an element constructed in the first decade of the establishment of the township. The hotel is of local social significance as a local hotel which has served the community for the last ninety years. Additionally, for many of those years, the hotel has remained in the ownership of one family. It is of aesthetic significance as a largely intact example of a Federation Freestyle hotel, retaining the whale bones which have been attached to the front facade since 1923.

Gazettal Details

Permit Exemptions

Exemptions Policy

Assessment Against Criteria

AHC A.4 Importance for association with events, developments or cultural phases which have had a significant role in the human occupation and evolution of the nation, State, region or community.

AHC E.1 Importance for a community for aesthetic characteristics held in high esteem or otherwise valued by the community.

AHC G.1 Importance as a place highly valued by a community for reasons of religious, spiritual, symbolic, cultural, educational, or social associations.

Date Assessed 13/08/2004 Assessed By F Woodhouse

Comparisons

Rare Assessment

Intact Assessment

Good.

Include in VHR Include in RNE Include in Local Planning Scheme No Recommendations for Inclusions

Recommended Management

Heritage Act Categories	Heritage Item Groups	Heritage Item Categories
Heritage place	Commercial	Hotel

Title Details

Physical Description

WONTHAGGI HOTEL

Heritage Overlay No HO165

PropertyNo

File Number

Heritage Study No 533

Heritage Grading

HPD Number 209

HI Number

VHR Number

Other Names/s FORMER TABERNERS HOTEL

Precinct

Group Number

Extra Files

The Wonthaggi Hotel is a two storey Federation Freestyle red brick building, with a pitched roof clad with corrugated galvanised steel. Assymetrical in design, the facades are finished with a combination of face red brick and white painted rendered quoins, lintels, and parapet detailing. At ground floor level, new joinery has been installed in some of the doorways. Some of the windows feature multipane casement top lights. The upper level features double hung sash windows. The verandah extends the full length of the McBride Avenue elevation and part way along the Murray Street elevation. It is intact to its original design, though modern steel verandah posts have been installed instead of the presumably original timber.

Physical Condition and/or Archaeological Potential

Usage Hotel.

Associated People

Historical Notes

Wonthaggi was established as a mining town in 1909 to supply the Victorian Railways with black coal, and thus make Victoria independent of the privately owned New South Wales coalfields, the previous source of coal for the railways. The decision to proceed with mining coal from the Powlett Coalfield was prompted by the coal miners in New South Wales strike in 1909. When established, the coal was worked by the State Coal Mine from the Dudley and Kirrak Basins. The township of Wonthaggi is located on a ridge between the two basins. Initially the miners lived in a tent city; by 1910 the Government had laid out a model township. By 1921 Wonthaggi had a population of 5,000, making it one of the largest towns in Gippsland at the time. Wonthaggi's population peaked at around 12,000 in the mid-1920s when the mine was at its operational peak. The township was divided into commercial and residential areas. Its infrastructure provided for housing, water, churches, schools, and other social facilities.

The Wonthaggi Hotel is located on land originally comprising Allotments 1-4 in the Township of Wonthaggi, which was first sold to Charles Daniel Taberner in 1914 at a cost of 2000 pounds. Conveniently located opposite the Wonthaggi Railway Station, the site was an ideal location for a hotel. In 1915 after acquiring a liquor licence, the new Taberner's Hotel opened, built at a cost of £5000. The laneway behind the property between Murray and Graham Streets became known as Taberner's Lane.

On 4 July 1923, a dead whale washed up on the nearby coast. Taberner purchased the jawbones from the carcass's discoverers for £25, and placed them at the verandah corner, where they have since become an iconic town landmark. It became known locally as the 'Whalebone Hotel'.

The Taberner family has retained ownership of the hotel ever since, experimenting with joint ownership with Carlton United Breweries in 1986 only to revert back to family ownership in 1994. The roof of the hotel was severely damaged in a freak storm in 1993, with repairs costing around one million dollars. A bottleshop and cool room were built on the west side of the building in 1994. The original lounge has been extended.

Historic Themes

Thematic History

13.1 Larger Centres: Wonthaggi, the site of the former State Coal Mine, was established to supply coal to the Victorian Railways and eventually other industries. Today it is a flourishing town and the largest shopping centre in South Gippsland. Wonthaggi's commercial area includes an extensive range of shops. As a tourist destination, the area supports hotels, motels, caravan parks and accommodation for holiday rentals. Nearby attractions include Cape Paterson and its fine surf beaches and the adjoining Bunurong Marine Park. The State Coal Mine and Mining Museum, now a tourist attraction, is managed by Parks Victoria.

Listings

Name	Number	Date
Local Planning Scheme		

References

Author	Title	Year	Shelf	Location
Department of Land and Survey	Marsh Plan of Township of Wonthaggi, Parish of Wonthaggi, County of Mornington			
John M Coghlan	The State Coal Mine and Wonthaggi 1909-1968	1979		
Kathryn Ferrito	Taberners: A Wonthaggi Tradition	1994		
T.J. Gannon (ed.)	Wonthaggi and District, Past and Present	1934		

Conservation Plans

Owner Type

WONTHAGGI HOTEL

Heritage Overlay No **HO165**
Property No
File Number
Heritage Study No **533**
Heritage Grading

HPD Number **209** HI Number VHR Number

Other Names/s **FORMER TABERNERS HOTEL**

Precinct Group Number

Extra Files

Section 32 Recommendation

Owners/Occupants/Managers

Other Notes

Application Detail

Adviser Comments

Planning Scheme Amendments

Overlay Controls

Planning Scheme Schedule

External Paint Controls? Yes

Included in Vic Heritage Register? No

Internal Alteration Controls? No

Prohibited uses may be permitted? Yes

Tree Controls? No

Name of incorporated plan No

Outbuildings/fences not exempt? No

Aboriginal Heritage Place? No