

PLACE	MINER'S COTTAGE						
Address	112 Reed Crescent WONTHAGGI						
Study No	WN031	HO No	-	HPD No	-	Allotment No	15 (Section 45)
LGA	Bass Coast	Ward	Hovell	Parish	Wonthaggi	County	Mornington

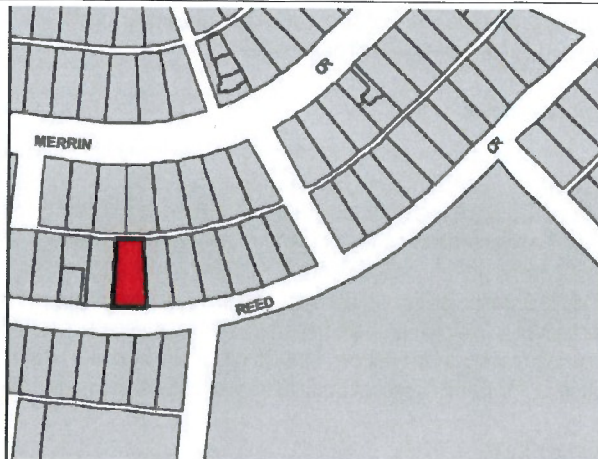


Image Date	17 July 2009	Extent of listing	Whole allotment			
Designer/architect	Unknown	Architectural style	Federation/Edwardian Period (1901-1918) Bungalow			
Builder/maker	Unknown	Commenced	1913	Completed	1913	
Her Act Category	Heritage place	Historic Theme/s	13.2 Building Towns (Larger Centres)			
Her Item Group	Residential buildings (private)	Assessed by	S Reeves	Date	28/08/09	
Her Item Category	House	Reviewed by	-	Date	-	
Usage (2009)	Residence	Condition	Good	Intactness	Excellent	
Significance	Local	Recommendation	Include in VHR <input type="checkbox"/>	Include in RNE <input type="checkbox"/>	Include in HO <input type="checkbox"/>	<input checked="" type="checkbox"/>

Statement of Significance

What is Significant?

The house at 112 Reed Crescent is a single-storey double-fronted weatherboard cottage with a hipped roof and an symmetrical frontage combining a gabled projecting bay with a bullnosed verandah. It was erected in 1913 for Ernest W Adams, a miner, and subsequent occupied by another miner, William Mason, whose family still lived there in the 1960s.

How is it Significant?

The house is of historic and aesthetic significance to the Shire of Bass Coast.

Why is it Significant?

Historically, the house is significant for associations with an early and important phase of private residential settlement in the Township of Wonthaggi. Erected during 1913, the present house was one of the first to be built in Reed Crescent and thus provides rare evidence of the expansion of residential settlement towards the outer fringe of the original township boundary (*AHC Criterion A.4*). With its modest proportions, simple pitched roof and bullnosed verandah, and minimal decorative embellishment, this house demonstrates the humble aspirations of the working class during a key phase in the town's development (*AHC Criterion D.2*).

Aesthetically, the house is significant as a good and notably intact example of its type. Its asymmetrical double-fronted expression is atypical (*AHC Criterion B.2*), contrasting with the symmetrical miner's cottages that otherwise tend to proliferate in the vicinity. Its external intactness is particularly noteworthy, retaining its original bullnosed verandah, turned finials and bracketed awnings to front windows. Set well back from the street on an unusually elevated site, this house remains a prominent and distinctive element in the streetscape (*AHC Criterion E.1*).

Physical Description

The house at 112 Reed Crescent, Wonthaggi, is a single-storey double-fronted Edwardian weatherboard cottage with a gabled roof clad in corrugated galvanised steel. Its asymmetrical frontage comprises a projecting gable-roofed bay to the left side, and a elongated recessed wing, with verandah, to the right. The projecting bay has plain barge-boards, fretwork and a turned finial to the gable end, and a single rectangular window with timber-framed double-hung sashes, an unusual shaped timber sill plate, and a window hood in the form of a steel skillion rooflet, supported on timber brackets, with a scalloped fascia. Alongside, the verandah comprises a bullnosed roof supported on plain timber posts, with a timber plank fringe at the far end. There is a red brick chimney attached to the right side wall of the house.

Historical Notes

This house stands on part of Section 45 of the Township of Wonthaggi, a crescent-shaped block of eighteen residential allotments bounded by Reed Crescent, Merrin Crescent and two unnamed rights-of-way. The present site, designated as Lot 15 with frontage to Reed Crescent, was not recorded in the Borough of Wonthaggi Rate Book until the edition for 1913-14 (dated 6 October 1913), when it was described as the property of one Ernest W Adams, with a Net Annual Value of £12. Subsequent editions reveal that he remained living there until around 1918, by which time it was one of only four houses that had yet been built on Section 45. From 1919, the owner of the house was listed as William Mason, who is variously identified as a miner (in the rate books) or as a blacksmith (in his own probate papers). The latter source further reveals that after Mason died on 6 February 1920, his entire estate was bequeathed to his widow, Mrs Dinah Lizzie Mason. Rate books subsequently listed her as the owner and occupant of the house at 112 Reed Crescent from 1921 until at least the early 1960s.

Comparisons

The asymmetrical double-fronted form of this simple cottage contrasts with the symmetrical miner's cottages that otherwise tend to proliferate in this part of Wonthaggi. In this respect, the present house is rather more comparable to the asymmetrical-fronted Government Cottages that were erected by the Lands Department slightly further to the north, but of which few examples remain intact. As a notably intact example of its type, this humble miner's cottage at 112 Reed Crescent is perhaps most comparable to the similarly asymmetrical former carpenter's cottage at 57 Broome Crescent.

Recommended Management

Encourage the retention of the return verandah as a semi-open space, with no solid or glazed infill to be constructed.

References

<i>Author</i>	<i>Title</i>	<i>Year</i>
Borough of Wonthaggi	Rate Books (held by Public Record Office)	Various