

HERITAGE PLACE

NAME OF PLACE: S.C.M NO.14 AIRSHAFT

ADDRESS/LOCATION OF PLACE: Lower Powlett Road DUDLEY SOUTH

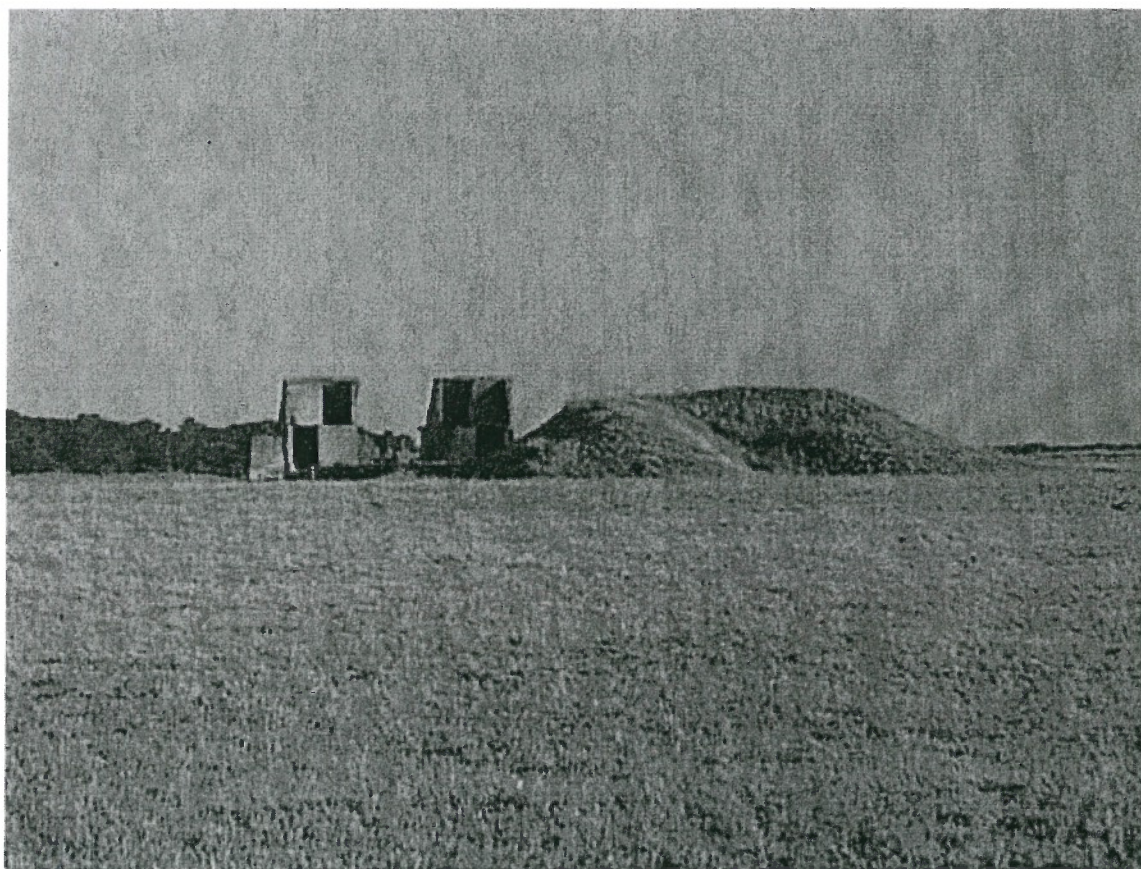
STUDY NUMBER: 560

HERITAGE OVERLAY NUMBER: HO73

LOCAL GOVERNMENT AREA: Bass Coast Shire

PARISH: PARISH OF WONTHAGGI

SIGNIFICANCE RATING: State



S.C.M No.14 Airshaft, Lower Powlett Road, Dudley South

Image Date: March 2004

EXTENT OF LISTING:

Nominal 20 metres all around above-ground elements.

S.C.M NO.14 AIRSHAFT

Heritage Overlay No **HO73**
PropertyNo
File Number
Heritage Study No **560**
Heritage Grading

HPD Number 99

HI Number

VHR Number

Other Names/s

Precinct

Group Number

Extra Files

Location Lower Powlett Road DUDLEY SOUTH

PARISH OF WONTHAGGI

COUNTY OF MORNINGTON

Planning Authority

Ward Hovell

Access Description

Map Number

0

Map Scale 1:100000

Latitude

Longitude

UMG Zone

Easting

Northing

Location Validity

Spatial Accuracy

Extent of Listing

Nominal 20 metres all around above-ground elements.

Published Extent of Listing

Significance State

Statement of Significance

The SCM No.14 airshaft, Lower Powlett Road, is of state historical significance. It provides evidence of the operations of the State Coal mine which played a crucial role in supplying black coal to Victoria's railway network and was the economic life-blood of the Wonthaggi area. The site provides one of the best collections of surface artefacts associated with the ventilation of the mine complex, and at the time of construction, the airlocks were regarded as a novel arrangement.

Gazettal Details

Permit Exemptions

Exemptions Policy

Assessment Against Criteria

AHC B2: Importance in demonstrating a distinctive way of life, custom, land-use, function or design no longer practised, in danger of being lost, or of exceptional interest.

Date Assessed 06/08/2004 Assessed By F Woodhouse

Comparisons

Rare Assessment

Intact Assessment

Fair

Include in VHR Include in RNE Include in Local Planning Scheme No Recommendations for Inclusions

Recommended Management

The purchase of the site to allow public access should be considered. Appropriate interpretative signage should also be provided. Undertake a conservation survey to scope necessary works.

Heritage Act Categories

Heritage Item Groups

Heritage Item Categories

Title Details

Physical Description

The SCM No.14 airshaft site contains an air shaft plenum chamber, exhaust fan machinery foundations, two airlocks, a shaft site, four concrete pad footings for poppet legs, the concrete slab floor of a change room, a boiler setting and a mullock dump (description based on Andrew Ward and Associates, 'Conservation Analysis and Management Strategy: State Coal Mine, Wonthaggi', October 1994, p.67).

Physical Condition and/or Archaeological Potential

S.C.M NO.14 AIRSHAFT

Heritage Overlay No **HO73**

PropertyNo

File Number

Heritage Study No **560**

Heritage Grading

HPD Number 99

HI Number

VHR Number

Other Names/s

Precinct

Group Number

Extra Files

Fair

Usage Vacant.

Associated People

Historical Notes

The State Coal Mine was first established in November 1909, and consisted of a series of 12 separate mines. In 1919, it was proposed to construct a new air shaft to provide better ventilation to benches 3 and 4 in the McBrides Tunnel section of the mine, at an estimated cost of £6000. Construction work commenced in 1920. The No. 14 Air Shaft was completed in 1922 and featured a large 150,000 cubic foot exhaust fan. In 1927 a winding gear system was installed at a cost of £15,000, resulting in output from the benches increasing from 790 to 930 tons. The State Coal mine operated from November 1909 to December 1968.

Historic Themes

Thematic Environmental History

/2.1 State Coal Mine

The State Coal Mine, opened in 1909, produced black coal until its closure in 1968. The establishment of the mine, and the township brought many new residents to the area as labour for the mine. The mine was profitable until well into the 1920s, but began to decline in the following decade. Production over the 59 years of its operation was nearly 17 million tonnes of black coal, 75% of all black coal mined in Victoria. At its peak, it employed 1,800 men.

Listings

References

Author	Title	Year	ShelfLocation
Andrew C. Ward & Associates	Conservation analysis and management strategy state coal mine, Wonthaggi	1994	
John M Coghlan	The State Coal Mine and Wonthaggi 1909-1968	1977	

Conservation Plans

Owner Type

Section 32 Recommendation

Owners/Occupants/Managers

Owner Notes

Application Detail

Adviser Comments

Planning Scheme Amendments

Overlay Controls

Planning Scheme Schedule

External Paint Controls? No Included in Vic Heritage Register? No

Internal Alteration Controls? No Prohibited uses may be permitted? No

Tree Controls? No Name of incorporated plan No

Outbuildings/fences not exempt? No Aboriginal Heritage Place? No