

HERITAGE PLACE

NAME OF PLACE: BUNURONG SCHOOL

ADDRESS/LOCATION OF PLACE: 46-48 Station Street DUDLEY SOUTH

STUDY NUMBER: 449

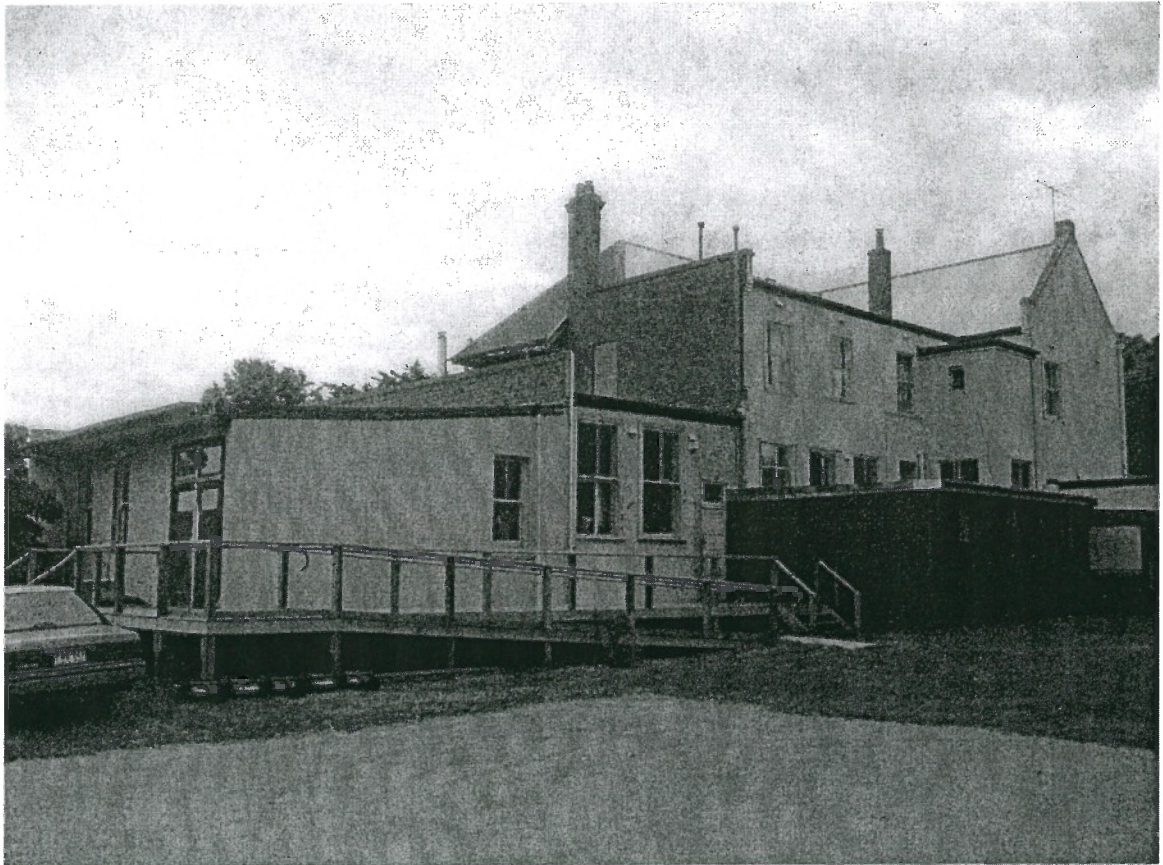
HERITAGE OVERLAY NUMBER: HO74

**OTHER NAME/S
OF PLACE:** STATE MINES HOTEL

LOCAL GOVERNMENT AREA: Bass Coast Shire

PARISH: PARISH OF WONTHAGGI

SIGNIFICANCE RATING: State



Bunurong School (former State Mines Hotel) 46-48 Station Street, South Dudley

Image Date: December 2003

EXTENT OF LISTING:

Whole allotment.

BUNURONG SCHOOL

Heritage Overlay No **HO74**
PropertyNo
File Number
Heritage Study No **449**
Heritage Grading

HPD Number 100 HI Number VHR Number

Other Names/s STATE MINES HOTEL

Precinct Group Number

Extra Files

Location 46-48 Station Street DUDLEY SOUTH

PARISH OF WONTHAGGI

COUNTY OF MORNINGTON

Planning Authority

Ward Hovell

Access Description

Map Number 0 Map Scale 1:100000 Latitude Longitude

UMG Zone Easting Northing

Location Validity Spatial Accuracy

Extent of Listing

Whole allotment.

Published Extent of Listing

Significance State

Statement of Significance

The former State Mines Hotel is of local historic and aesthetic significance. Erected in c.1919 it is historically significant as a building associated with the operations of the State Coal Mine. The State Coal Mine at Wonthaggi played a crucial role in supplying black coal to Victoria's railway network and was the economic life-blood of the Wonthaggi area. The former State Mines Hotel is of local aesthetic significance as a largely intact example of a Federation free-style or Edwardian Baroque hotel. The former Hotel is also a distinct element amidst the predominately single-storey cottages of the South Dudley townscape.

Gazettal Details

Permit Exemptions

Exemptions Policy

Assessment Against Criteria

AHC A.4 Importance for association with events, developments or cultural phases which have had a significant role in the human occupation and evolution of the nation, State, region or community.

AHC C.2 Importance for information contributing to a wider understanding of the history of human occupation of Australia.

AHC E.1 Importance for a community for aesthetic characteristics held in high esteem or otherwise valued by the community.

Date Assessed 05/08/2004 Assessed By F Woodhouse

Comparisons

Rare Assessment

Intact Assessment

Good

Include in VHR Include in RNE Include in Local Planning Scheme No Recommendations for Inclusions

Recommended Management

Investigate original external paint colours.

Remove skillion-roof addition abutting Station Street facade.

Remove paint from originally unpainted brickwork and elsewhere retain unpainted finish to brickwork

Heritage Act Categories

Heritage Item Groups

Heritage Item Categories

Title Details

BUNURONG SCHOOL

Heritage Overlay No **HO74**

PropertyNo

File Number

Heritage Study No **449**

Heritage Grading

HPD Number 100

HI Number

VHR Number

Other Names/s STATE MINES HOTEL

Precinct

Group Number

Extra Files

Physical Description

The former State Mines Hotel is an Edwardian, double-storey red-brick hotel with rendered dressings. The Station Street facade on the ground floor has a recessed arched entry with an elaborate keystone. The first floor contains a balconette with modillion brackets and Ionic order columns supporting a corrugated steel roof. The facade has a segmental arched parapet bearing the hotel's name in pressed cement lettering, flanked on either side by rendered cartouches. On the Dudley Street elevation, the first floor is red-brick with roughcast banding. The first floor windows have corrugated steel awnings supported on curved timber brackets. To the west and rear elevations the brick-work is overpainted. The rear skillion wing is possibly an early addition. Modern single and double storey brick additions are also visible to the rear. The timber-framed windows are double-hung sashes.

Physical Condition and/or Archaeological Potential

Fair

Usage School.

Associated People

Historical Notes

The suburb of Dudley South, 1.5 km from Wonthaggi, was named after Earl Dudley, Governor-General of Australia from 1908-11. The State Mines Hotel first appears in commercial directories in 1920, and is believed to have operated as a hotel until the mid 1950s. Although the State Mine did not close until 1968, it is not known why the hotel closed in the 1950s. It has subsequently been used as a boarding house, caravan park and as a centre for temporary residential accommodation. In 2002 it was converted into the Bunurong School.

Historic Themes

Thematic Environmental History

7.2.1 State Coal Mine

When the State Coal Mine at Wonthaggi opened in 1909, accommodation for workers became a matter of urgency. Wonthaggi was laid out as a residential and commercial township, and the population increased for a decade to cope with the influx of workers requiring housing. Dudley South, a short distance from Wonthaggi, also accommodated the mine workers, and many miners cottages are still visible in the suburb.

Listings

References

Author	Title	Year	ShelfLocation
Bunurong School Co-Operative Limited	Bass Coast Shire Planning Permit Application	2001	
John M Coghlan	The State Coal Mine and Wonthaggi: 1909-1968	1979	
Richard Apperly, Robert Irving & Peter Reynolds	A Pictorial Guide to Identifying Australian Architecture	1999	
Sands & McDougall's Directories	Hotels	1915	
		1925	

Conservation Plans

Owner Type

Section 32 Recommendation

Owners/Occupants/Managers

Other Notes

Application Detail

Adviser Comments

Planning Scheme Amendments

Overlay Controls

