

HERITAGE PLACE

NAME OF PLACE: HOUSE

ADDRESS/LOCATION OF PLACE: 3 The Crescent INVERLOCH

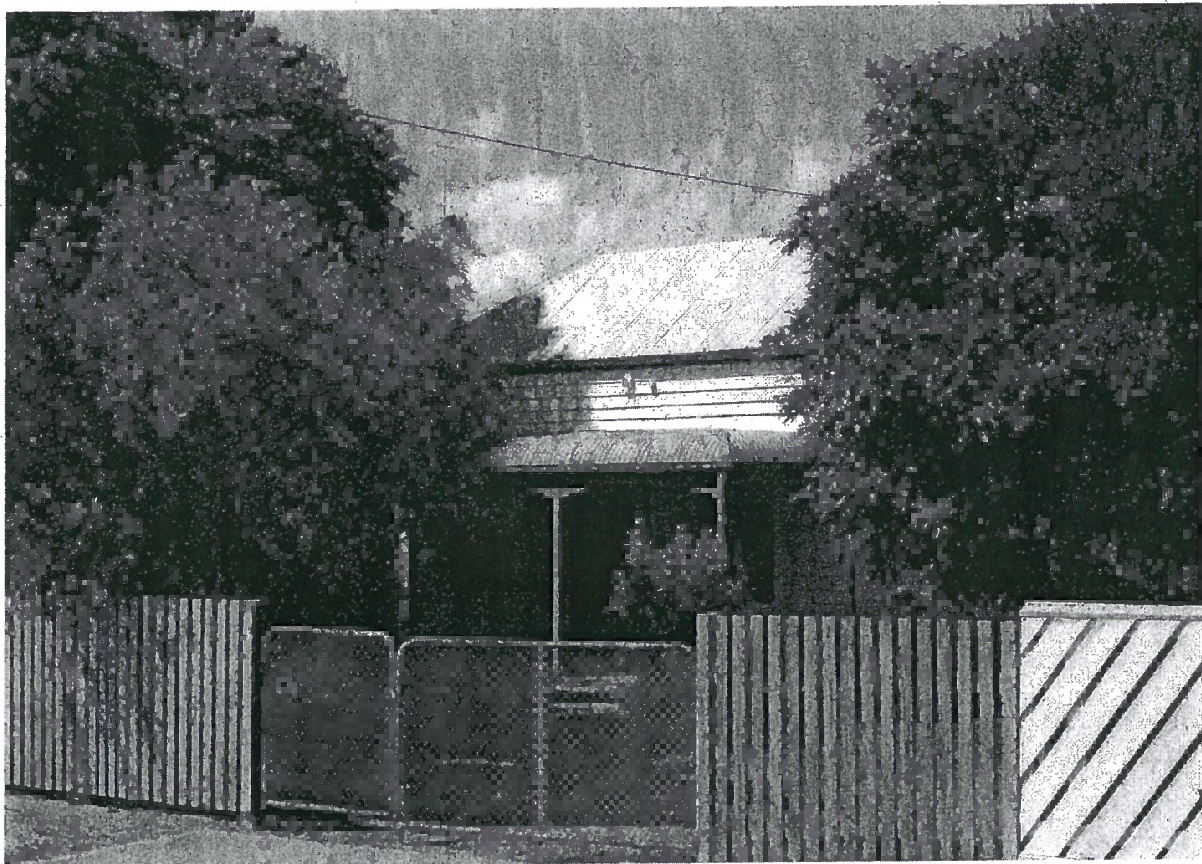
STUDY NUMBER: 170

HERITAGE OVERLAY NUMBER: HO83

LOCAL GOVERNMENT AREA: Bass Coast Shire

PARISH: PARISH OF KIRRAK

SIGNIFICANCE RATING: Local



House, 3 The Crescent, Inverloch.

Image Date: March 2004

EXTENT OF LISTING:

Whole allotment.

HOUSE

Heritage Overlay No **HO83**

PropertyNo

File Number

Heritage Study No **170**

Heritage Grading

HPD Number 168

HI Number

VHR Number

Other Names/s

Precinct

Group Number

Extra Files

Location 3 The Crescent INVERLOCH

PARISH OF KIRRAK

COUNTY OF BULN BULN

INVERLOCH (T)

Planning Authority

Ward Townsend

Access Description

Map Number

0

Map Scale 1:100000

Latitude

Longitude

UMG Zone

Easting

Northing

Location Validity

Spatial Accuracy

Extent of Listing

Whole allotment.

Published Extent of Listing

Significance Local

Statement of Significance

The house at 3 The Crescent is of local historic and aesthetic significance. The site is historically significant as part of the original landholding of one of the earliest settlers in Inverloch, George Wrigley. The cottage is demonstrative of the aspirations and means of the early settlers generally in the municipality. The house is aesthetically significant as a largely intact example of an Edwardian style cottage.

Gazettal Details

Permit Exemptions

Exemptions Policy

Assessment Against Criteria

A.4 Importance for association with events, developments or cultural phases which have had a significant role in the human occupation and evolution of the nation, State, region or community.

AHC E.1 Importance for a community for aesthetic characteristics held in high esteem or otherwise valued by the community.

Assessed 10/08/2004 Assessed By F Woodhouse

Comparisons

Rare Assessment

Intact Assessment

Good

Include in VHR Include in RNE Include in Local Planning Scheme No Recommendations for Inclusions

Recommended Management

Replace chainlink gate with a design to match existing timber picket fence.

Investigate original paint colours when due for a repaint.

Heritage Act Categories

Heritage Item Groups

Heritage Item Categories

Title Details

Architect/Designers

Unknown

Builders/Makers

Unknown

HPD Number 168

HI Number

VHR Number

Other Names/s

Precinct

Group Number

Extra Files

Physical Description

The house at 3 The Crescent Inverloch, is a single-storey Edwardian weatherboard cottage with a hipped corrugated galvanised steel roof, bullnose front verandah and skillion roofed rear wing. The symmetrical front elevation contains a central panelled timber front door, flanked on either side by a timber-framed double-hung sash window. The verandah is supported by timber posts with timber brackets and has a recent timber floor. There is also a skillion roofed addition to the rear.

Physical Condition and/or Archaeological Potential

Good

Usage Residence/Holiday House

Associated People

George Wrigley.

Historical Notes

The first leasehold in South West Gippsland was obtained by George Raff in 1842, but this was later absorbed into George Black's Tarwin Meadows Run in 1851. Black later cleared the land for grazing and farming. When cattle runs were opened for farming by the Land Act of 1869, selections made in South West Gippsland included Inverloch.

The seaside town of Inverloch was first named Anderson's Inlet after the first permanent European settler in Western Port, Samuel Anderson. A lowland Scot, Anderson had worked for the Van Diemen's Land Company until he sailed across Bass Strait in 1835 and settled on the Bass River. Here he successfully grew wheat and encouraged his brothers from Scotland to join him. The township of Anderson Inlet was proclaimed in 1886, and renamed Inverloch in 1889, presumably in honour of the retirement of Sir Henry Brougham Loch, Governor of Victoria from 1884-89. The nearby township of Loch, was also named after the Governor. The name also derives from the Gaelic 'inver' meaning 'at the entrance to' and 'loch', meaning 'lake'.

Inverloch developed as a fishing village and as a small-ship port to service the farms being established around the Inlet. By the late nineteenth century it was established as both a seaside resort and a port for transporting local produce to Melbourne. In the 1890s, when coalmines were opened in Korumburra, Outtrim and Jumbunna, Inverloch was the nearest seaside holiday resort. When the State Coal Mine opened at Wonthaggi in 1909, the coal was initially shipped to Melbourne from Inverloch until the Nyora-Wonthaggi line was opened in 1910. Many of the mine-workers lived in Inverloch, and cycled to Wonthaggi every day. When the mine closed in 1968, some of the miners' cottages were transported to Inverloch as holiday homes.

This house is constructed on part of the original Allotment 48 at Anderson's Inlet, comprising 200 acres owned by George Wrigley (1838-1900). Originally a school teacher, he later became a partner in the Melbourne company, Wrigley & Scales, whose bond stores were located at King Street and at Flinders Lane West in Melbourne. Wrigley leased his western (Flinders Lane) store from Phillip Island landowner, J P Harbison. This house was originally built in c.1895 in the inland coal mining town of Outtrim. It was relocated to Wonthaggi in 1910, then moved again to its current site in c.1953. It was named 'Blantyre' by its owners, retired farmers Mr and Mrs Livingstone, after their property in Tarwin. A later owner was a Mr Bergimer.

Historic Themes**Thematic Environmental History**

13.2 Coastal Towns and 13.3 Tourist Resorts: The coastal town of Inverloch, established on Anderson's Inlet in 1886, became a popular resort in the late nineteenth century with locals from mining districts, and from 1909, with miners from Wonthaggi. When roads and motor transport became more accessible in the 1930s and 1940s, it became popular with holidaymakers from Melbourne. Families enjoyed holidays of four weeks or more in the same rented house, and many families stayed in the area until Easter. Many holiday residents have retired to Inverloch permanently.

13.7 Relocations: Throughout the Shire of Bass Coast, a number of houses have been identified as having been relocated from other sites, frequently other parts of Gippsland. This trend, visible from the turn of the century when houses were relocated from the State Coal Mine suburb of Dudley, has continued. When the State Coal Mine at Wonthaggi closed in 1968, some of the miners cottages were transported to Inverloch as holiday homes. In the 1980s, when the nearby coal-mining towns of Moe, Morwell and Yallourn, ceased production of brown coal, and the population began to shift elsewhere, leaving valuable housing stock behind. Many of the houses which have been relocated are late-Victorian or early Edwardian, and sit comfortably with the existing building stock of the township to which they are relocated. They are important examples of their type, notwithstanding their relocation, and are evidently valued by the community.

Listings**References**

Author	Title	Year	Shelf	Location
--------	-------	------	-------	----------

HOUSE

Heritage Overlay No

HO83

PropertyNo

File Number

Heritage Study No

170

Heritage Grading

HPD Number 168

HI Number

VHR Number

Other Names/s

Precinct

Group Number

Extra Files

E P Brewster (ed.)	Looking Back at Inverloch	1988
Inverloch Historical Society Inc.	Anderson Inlet Inverloch: A Short A-Z History	1997
Les Blake	Place Names of Victoria	1974
Les Blake	Vision & Realisation, Vol. 3	1973
Norm Deacon, Inverloch Historical Society, pers comm.		2004
Norman R Deacon (ed.)	Anderson Inlet Inveloch: Inverloch and District Identities and Pioneers	2000
R V Billis and A S Kenyon	Pastoral Pioneers of Port Phillip	1974
Thomas Horton and Kenneth Morris	The Andersons of Western Port	1983

Conservation Plans

ner Type

Section 32 Recommendation

Owners/Occupants/Managers

Other Notes

Application Detail

Adviser Comments

Planning Scheme Amendments

Overlay Controls

Planning Scheme Schedule

External Paint Controls? No

Included in Vic Heritage Register? No

Internal Alteration Controls? No

Prohibited uses may be permitted? Yes

Tree Controls? No

Name of incorporated plan No

Outbuildings/fences not exempt? No

Aboriginal Heritage Place? No