

# HERITAGE PLACE

**NAME OF PLACE:** ANDERSON'S INLET ANGLING CLUB

**ADDRESS/LOCATION OF PLACE:** Foreshore, The Esplanade INVERLOCH

**STUDY NUMBER:** 185

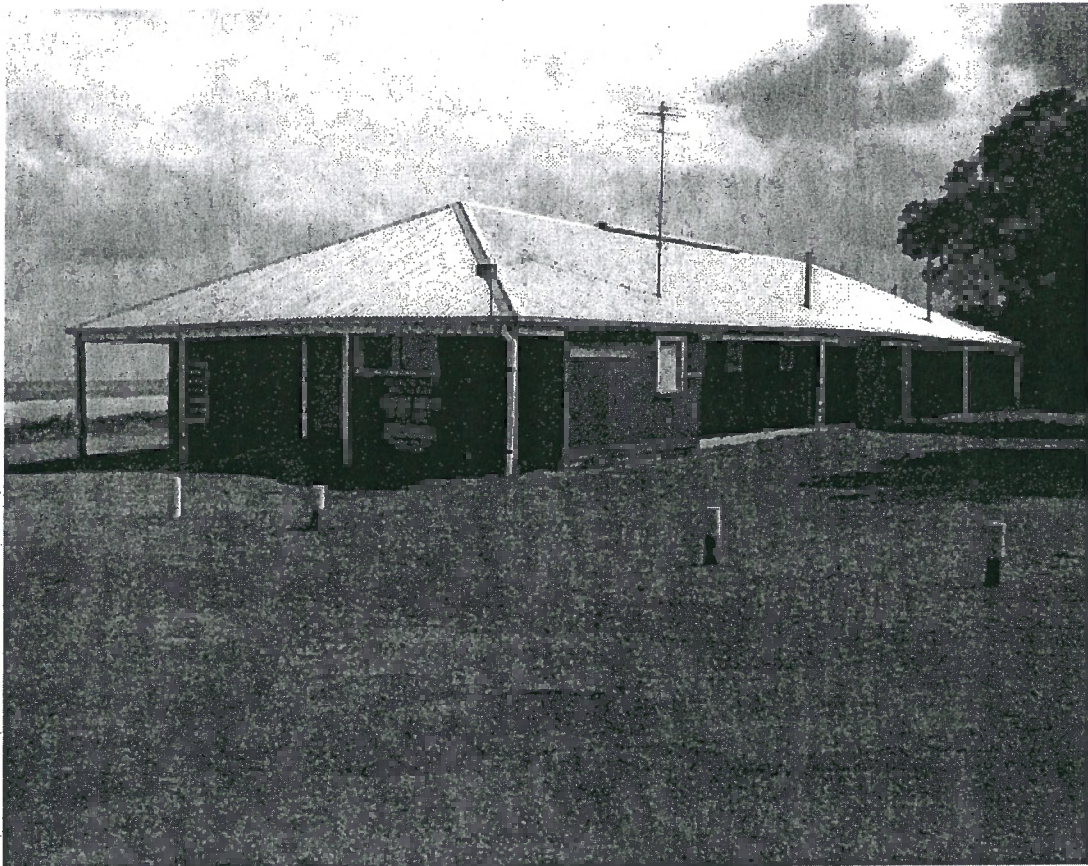
**HERITAGE OVERLAY NUMBER:** HO85

---

**LOCAL GOVERNMENT AREA:** Bass Coast Shire

**PARISH:** PARISH OF KIRRAK

**SIGNIFICANCE RATING:** Local



Anderson's Inlet Angling Club

**Image Date:** March 2002

**EXTENT OF LISTING:**

Nominally 20 metres all around building on the landward sides and to the low water line on the coast side.

# ANDERSON'S INLET ANGLING CLUB

Heritage Overlay No **HO85**  
PropertyNo  
File Number  
Heritage Study No **185**  
Heritage Grading

HPD Number 175

HI Number

VHR Number

Other Names/s

Precinct

Group Number

Extra Files

Location Foreshore, The Esplanade INVERLOCH

PARISH OF KIRRAK

COUNTY OF BULN BULN

INVERLOCH (T)

Planning Authority

Ward Townsend

Access Description

Map Number

0

Map Scale 1:100000

Latitude

Longitude

UMG Zone

Easting

Northing

Location Validity

Spatial Accuracy

Extent of Listing

Nominally 20 metres all around building on the landward sides and to the low water line on the coast side.

Published Extent of Listing

Significance Local

Statement of Significance

The Anderson's Inlet Angling Club is of local historical significance as a recreational club established in a seaside resort by the township's residents for their enjoyment of fishing, and is demonstrative of the 1960s phase of development in the township. It is also demonstrative of the theme of relocations evident in the Shire.

Gazettal Details

Permit Exemptions

Exemptions Policy

Assessment Against Criteria

D.2 Importance in demonstrating the principal characteristics of the range of human activities in the Australian environment (including way of life, philosophy, custom, process, land use, function, design or technique).

Date Assessed 10/08/2004 Assessed By F Woodhouse

Comparisons

Rare Assessment

Intact Assessment

Good.

Include in VHR  Include in RNE  Include in Local Planning Scheme   No Recommendations for Inclusions

Recommended Management

Replace non-original windows with timber-framed windows to match original.  
Reinstate timber verandah posts to match original.  
Remove addition to south elevation.

Heritage Act Categories

Heritage Item Groups

Heritage Item Categories

Title Details

Architect/Designers

Unknown

Builders/Makers

Unknown

# ANDERSON'S INLET ANGLING CLUB

Heritage Overlay No H085  
Property No  
File Number  
Heritage Study No 185  
Heritage Grading

HPD Number 175

HI Number

VHR Number

Other Names/s

Precinct

Group Number

Extra Files

|                      |      |       |    |           |  |       |    |
|----------------------|------|-------|----|-----------|--|-------|----|
| Construction Started |      | Circa | No | Completed |  | Circa | No |
| Construction Started | 1962 | Circa | No | Completed |  | Circa | No |

## Physical Description

The Anderson's Inlet Angling Club is a single-storey building with a hipped corrugated galvanised steel roof extending over a verandah on all sides. Walls are clad in strapped fibro-cement and contain alternating multi-pane timber-framed windows and top-hung fibro-cement shutters. The north verandah has been partially infilled with fibro-cement cladding and there is a skillion roofed addition abutting the south elevation. Other alterations include recent treated pine verandah posts and aluminium-framed windows. The panelled timber entry door has a fanlight which is and a non-original concrete ramp.

## Physical Condition and/or Archaeological Potential

Good

Age Angling Club.

## Associated People

## Historical Notes

The first leasehold in South West Gippsland was obtained by George Raff in 1842, but this was later absorbed into George Black's Tarwin Meadows Run in 1851. Black later cleared the land for grazing and farming. When cattle runs were opened for farming by the Land Act of 1869, selections made in South West Gippsland included Inverloch.

The seaside town of Inverloch was first named Anderson's Inlet after the first permanent European settler in Western Port, Samuel Anderson. A lowland Scot, Anderson had worked for the Van Diemen's Land Company until he sailed across Bass Strait in 1835 and settled on the Bass River. Here he successfully grew wheat and encouraged his brothers from Scotland to join him. The township of Anderson Inlet was proclaimed in 1886, and renamed Inverloch in 1889, presumably in honour of Sir Henry Brougham Loch, Governor of Victoria from 1884-89. The nearby township of Loch, was also named after the Governor. The name also derives from the Gaelic 'inver' meaning 'at the entrance to' and 'loch', meaning 'lake'.

Inverloch developed as a fishing village and as a small-ship port to service the farms being established around the Inlet. By the late nineteenth century it was established as both a seaside resort and a port for transporting local produce to Melbourne. In the 1890s, when coalmines were opened in Korumburra, Outtrim and Jumbunna, Inverloch was the nearest seaside holiday resort. When the State Coal Mine opened at Wonthaggi in 1909, the coal was initially shipped to Melbourne from Inverloch until the Nyora-Wonthaggi line was opened in 1910. Many of the mine-workers lived in Inverloch, and cycled to Wonthaggi every day. When the mine closed in 1968, some of the miners' cottages were transported to Inverloch as holiday homes.

The land on which the Angling Club is built was originally part of the Crown Reserve, gazetted as a Public Reserve in the late nineteenth century. The Anderson's Inlet Angling Club was formed by a group of mainly small boat owners in April 1959. Late in 1961 the Club Committee approached the Foreshore Committee about securing a block on which to erect a clubhouse and the current site was chosen. A contract was awarded to W & D Donahue in March 1962 to relocate a suitable building from the former Epileptic Farm at Clayton to the present site.

## Historic Themes

### Thematic Environmental History

16.3 Clubs & Associations: In the early days of the Colony, schools and churches were essential to the infrastructure and establishment of a new township. Once these had been established, or often at the same time, Mechanics Institutes, Masonic Lodges, local halls and social clubs were built. Frequently, one hall was the home of several clubs, such as the Country Women's Associations, car clubs, Returned Services Leagues and agricultural societies. In the Bass Coast Shire, a wide variety of clubs and associations have been formed, and include the Wonthaggi Leek Club, the Rifle Club, Girl Guides and Scouts. The Angling Club, situated beside the sea, is one of these types of recreational institutions.

## Listings

## References

| Author                            | Title                                         | Year | ShelfLocation |
|-----------------------------------|-----------------------------------------------|------|---------------|
| E P Brewster (ed.)                | Looking Back at Inverloch                     | 1988 |               |
| Inverloch Historical Society Inc. | Anderson Inlet Inverloch: A Short A-Z History | 1997 |               |
| Les Blake                         | Place Names of Victoria                       | 1974 |               |
| Les Blake                         | Vision & Realisation, Vol. 3                  | 1973 |               |

# ANDERSON'S INLET ANGLING CLUB

Heritage Overlay No **HO85**  
PropertyNo  
File Number  
Heritage Study No **185**  
Heritage Grading

HPD Number 175

HI Number

VHR Number

Other Names/s

Precinct

Group Number

Extra Files

---

|                                  |                                                                          |      |
|----------------------------------|--------------------------------------------------------------------------|------|
| Norman R Deacon (ed.)            | Anderson Inlet Inverloch: Inverloch and District Identities and Pioneers | 2000 |
| R V Billis and A S Kenyon        | Pastoral Pioneers of Port Phillip                                        | 1974 |
| Thomas Horton and Kenneth Morris | The Andersons of Western Port                                            | 1983 |

Conservation Plans

Owner Type

Section 32 Recommendation

Owners/Occupants/Managers

er Notes

Application Detail

Adviser Comments

Planning Scheme Amendments

Overlay Controls

Planning Scheme Schedule

External Paint Controls? No

Included in Vic Heritage Register? No

Internal Alteration Controls? No

Prohibited uses may be permitted? Yes

Tree Controls? No

Name of incorporated plan No

Outbuildings/fences not exempt? No

Aboriginal Heritage Place? No