

# HERITAGE PLACE

**NAME OF PLACE:** 'MORNINGSIDE'

**ADDRESS/LOCATION OF PLACE:** 1 Freda Street INVERLOCH

**STUDY NUMBER:** 192

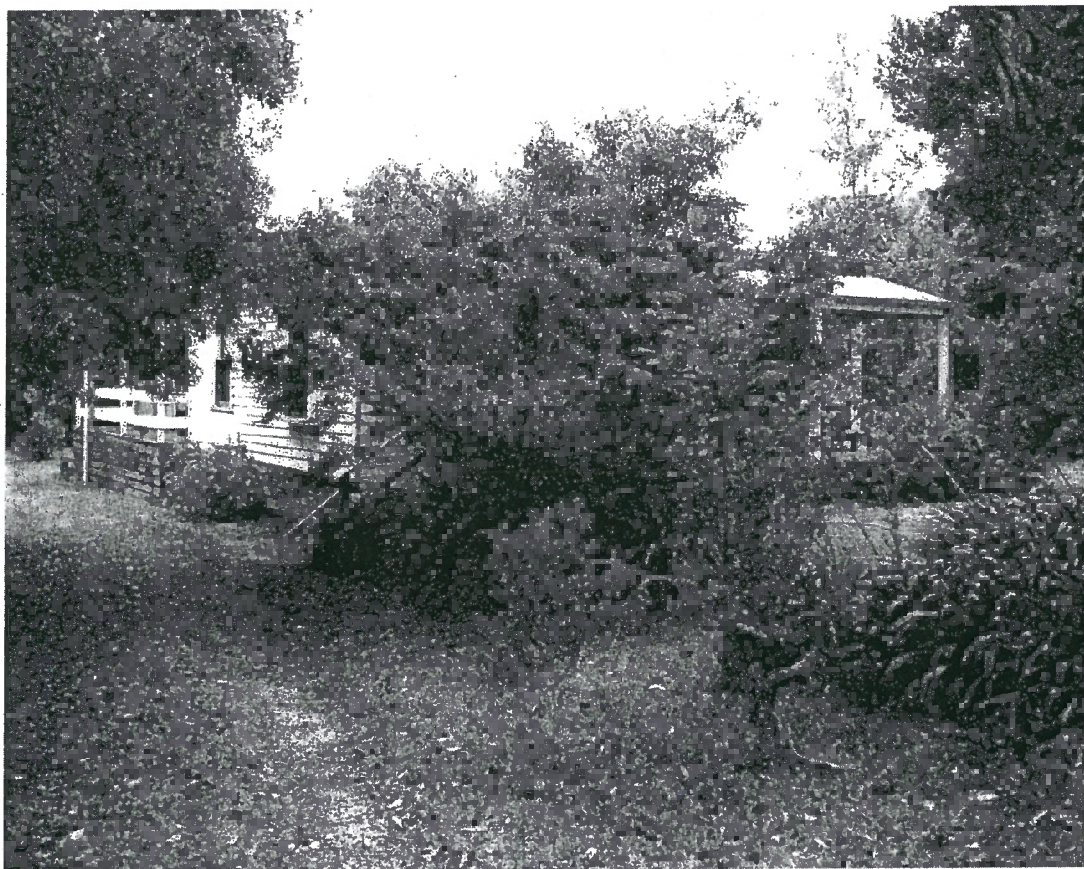
**HERITAGE OVERLAY NUMBER:** HO87

---

**LOCAL GOVERNMENT AREA:** Bass Coast Shire

**PARISH:** PARISH OF KIRRAK

**SIGNIFICANCE RATING:** Local



'Morningside', 1 Freda Street, Inverloch.

**Image Date:** March 2002

**EXTENT OF LISTING:**

Whole allotment.

# 'MORNINGSIDE'

Heritage Overlay No HO87

Property No

File Number

Heritage Study No 192

Heritage Grading

HPD Number 164

HI Number

VHR Number

Other Names/s

Precinct

Group Number

Extra Files

Location 1 Freda Street INVERLOCH

PARISH OF KIRRAK

COUNTY OF BULN BULN

INVERLOCH (T)

Planning Authority

Ward Townsend

Access Description

Map Number

0

Map Scale 1:100000

Latitude

Longitude

UMG Zone

Easting

Northing

Location Validity

Spatial Accuracy

Extent of Listing

Whole allotment.

Published Extent of Listing

Significance Local

Statement of Significance

The house at 1 Freda Street is of local historic and aesthetic significance. It has historical associations as part of the original landholding of one of the earliest settlers in Inverloch, George Wrigley. The house is aesthetically significant as a largely intact example of a late-Victorian or early-Edwardian style villa. It is demonstrative of the aspirations and means of the holidaymakers in the area, and provides evidence of an early phase of Inverloch's settlement.

Gazettal Details

Permit Exemptions

Exemptions Policy

Assessment Against Criteria

A.4 Importance for association with events, developments or cultural phases which have had a significant role in the human occupation and evolution of the nation, State, region or community.

A.1 Importance for a community for aesthetic characteristics held in high esteem or otherwise valued by the community.

Date Assessed 10/08/2004 Assessed By F Woodhouse

Comparisons

Rare Assessment

Intact Assessment

Good.

Include in VHR  Include in RNE  Include in Local Planning Scheme  No Recommendations for Inclusions

Recommended Management

Investigate original external paint colours when due for a repaint.  
Later additions may be demolished or altered as required.

Heritage Act Categories

Heritage Item Groups

Heritage Item Categories

Title Details

Architectural Style

Victorian Period (1851-1901) Vernacular

Architect/Designers

# 'MORNINGSIDE'

Heritage Overlay No HO87

PropertyNo

File Number

Heritage Study No 192

Heritage Grading

HPD Number 164

HI Number

VHR Number

Other Names/s

Precinct

Group Number

Extra Files

Unknown

Builders/Makers

Unknown

Physical Description

'Morningside', 1 Freda Street, Inverloch, is a single-storey Victorian weatherboard cottage with a hipped corrugated galvanised steel roof and skillion roofed front verandah supported on stop-chamfered timber posts. The symmetrical front elevation contains a central panelled timber front door flanked on either side by timber-framed, double-hung sash windows. There are later additions to the rear and side of the house including a c.1950s fibro-cement laundry.

Physical Condition and/or Archaeological Potential

Good

age Residence.

Associated People

George Wrigley

Historical Notes

The first leasehold in South West Gippsland was obtained by George Raff in 1842, but this was later absorbed into George Black's Tarwin Meadows Run in 1851. Black later cleared the land for grazing and farming. When cattle runs were opened for farming by the Land Act of 1869, selections made in South West Gippsland included Inverloch.

The seaside town of Inverloch was first named Anderson's Inlet after the first permanent European settler in Western Port, Samuel Anderson. A lowland Scot, Anderson had worked for the Van Diemen's Land Company until he sailed across Bass Strait in 1835 and settled on the Bass River. Here he successfully grew wheat and encouraged his brothers from Scotland to join him. The township of Anderson Inlet was proclaimed in 1886, and renamed Inverloch in 1889, presumably in honour of Sir Henry Brougham Loch, Governor of Victoria from 1884-89. The nearby township of Loch, was also named after the Governor. The name also derives from the Gaelic 'inver' meaning 'at the entrance to' and 'loch', meaning 'lake'.

Inverloch developed as a fishing village and as a small-ship port to service the farms being established around the Inlet. By the late nineteenth century it was established as both a seaside resort and a port for transporting local produce to Melbourne. In the 1890s, when coalmines were opened in Korumburra, Outtrim and Jumbunna, Inverloch was the nearest seaside holiday resort. When the State Coal Mine opened at Wonthaggi in 1909, the coal was initially shipped to Melbourne from Inverloch until the Nyora-Wonthaggi line was opened in 1910. Many of the mine-workers lived in Inverloch, and cycled to Wonthaggi every day. When the mine closed in 1968, some of the miners' cottages were transported to Inverloch as holiday homes.

'Morningside' is constructed on part of the original Allotment 48 at Anderson's Inlet, comprising 200 acres owned by George Wrigley (1838-1900). Originally a school teacher, he later became a partner in the Melbourne company, Wrigley & Scales, a firm of bond proprietors whose bond stores were located at King Street and at Flinders Lane West in Melbourne. While it is unclear if another building preceded the construction of the current house 'Morningside', it appears this house dates from the first decades of the twentieth century.

Historic Themes

Thematic Environmental History

13.3 Tourist Resorts: The tourist industry in Inverloch has been a part of the economy of since the nineteenth century. Inverloch became a popular resort with local miners from Wonthaggi and other mining districts. When roads and motor transport became more accessible in the 1930s and 1940s, it became popular with holidaymakers from Melbourne. Families enjoyed holidays of four weeks or more in the same rented house, and many families stayed in the area until Easter. Many holiday residents have retired to Inverloch live there permanently.

Listings

References

Author	Title	Year	Shelf	Location
E P Brewster (ed.)	Looking Back at Inverloch	1988		
Inverloch Historical Society Inc.	Anderson Inlet Inverloch: A Short A-Z History	1997		
Les Blake	Place Names of Victoria	1974		
Les Blake	Vision & Realisation, Vol. 3	1973		

**'MORNINGSIDE'**

Heritage Overlay No **HO87**  
PropertyNo  
File Number  
Heritage Study No **192**  
Heritage Grading

HPD Number 164

HI Number

VHR Number

Other Names/s

Precinct

Group Number

Extra Files

---

Norman R Deacon (ed.)	Anderson Inlet Inverloch: Inverloch and District Identities and Pioneers	2000
R V Billis and A S Kenyon	Pastoral Pioneers of Port Phillip	1974
Thomas Horton and Kenneth Morris	The Andersons of Western Port	1983

Conservation Plans

Owner Type

Section 32 Recommendation

Owners/Occupants/Managers

Other Notes

Application Detail

Adviser Comments

Planning Scheme Amendments

Overlay Controls

Planning Scheme Schedule

External Paint Controls? No

Included in Vic Heritage Register? No

Internal Alteration Controls? No

Prohibited uses may be permitted? Yes

Tree Controls? No

Name of incorporated plan No

Outbuildings/fences not exempt? No

Aboriginal Heritage Place? No