

HERITAGE PLACE

NAME OF PLACE: HOUSE

ADDRESS/LOCATION OF PLACE: 7 High Street INVERLOCH

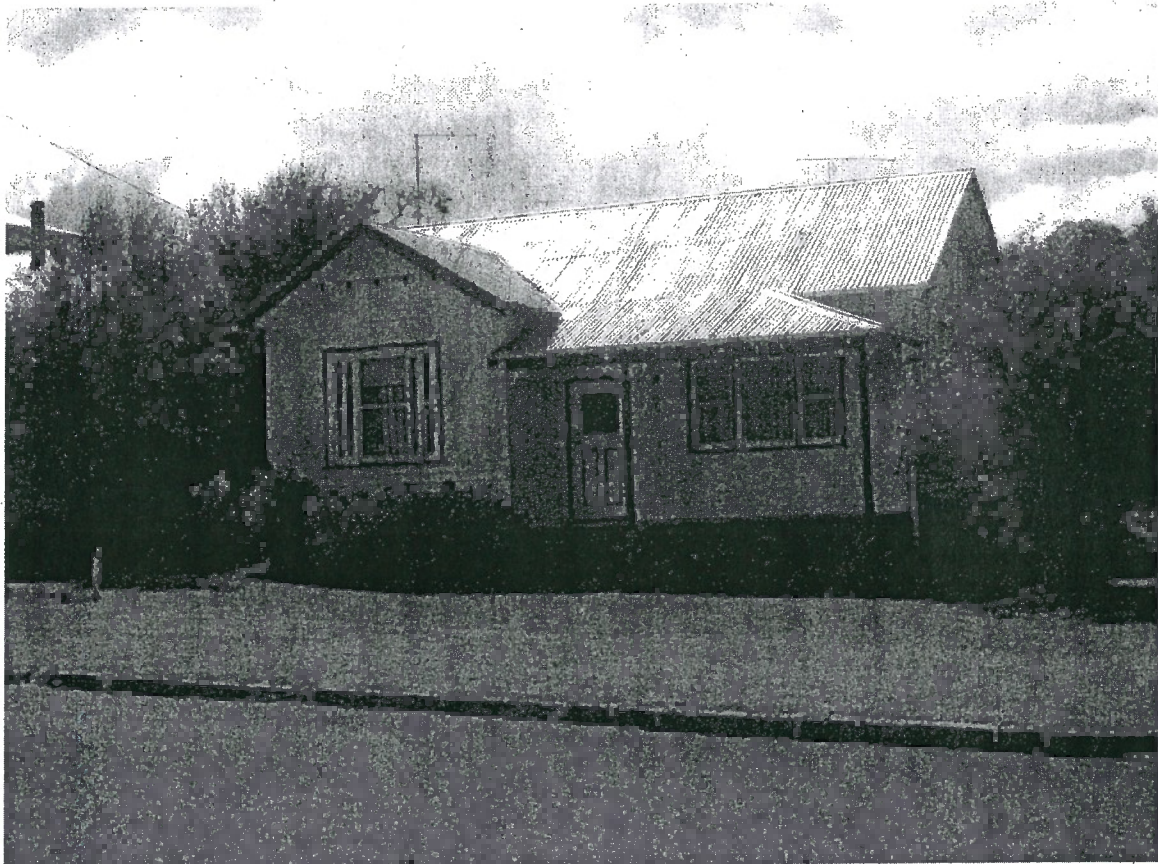
STUDY NUMBER: Stage 2

HERITAGE OVERLAY NUMBER: HO89

LOCAL GOVERNMENT AREA: Bass Coast Shire

PARISH: PARISH OF KIRRAK

SIGNIFICANCE RATING: Local



House, 7 High Street, Inverloch.

Image Date: March 2004

EXTENT OF LISTING:

Whole allotment.

HOUSEHeritage Overlay No **HO89**

Property No

File Number

Heritage Study No **Stage 2**

Heritage Grading

HPD Number **102**

HI Number

VHR Number

Other Names/s

Precinct

Group Number

Extra Files

Location **7 High Street INVERLOCH**

PARISH OF KIRRAK

COUNTY OF BULN BULN

INVERLOCH (T)

Planning Authority

Ward **Townsend**

Access Description

Map Number

0Map Scale **1:100000**

Latitude

Longitude

UMG Zone

Easting

Northing

Location Validity

Spatial Accuracy

Extent of Listing

Whole allotment.

Published Extent of Listing

Significance **Local**

Statement of Significance

The house at 7 High Street is of local historic and aesthetic significance. The site is historically significant as part of the original landholding of one of the earliest settlers in Inverloch, Jacob Thomas. The cottage is demonstrative of the aspirations and means of the early residents in the area, and provides evidence of an early phase of Inverloch's development. The house is aesthetically significant as a largely intact example of an-Edwardian style villa.

Gazettal Details

Permit Exemptions

Exemptions Policy

Assessment Against Criteria

Date Assessed **10/08/2004** Assessed By **F Woodhouse**

Comparisons

Rare Assessment

Intact Assessment

Include in VHR Include in RNE Include in Local Planning Scheme No Recommendations for Inclusions

Recommended Management

Consider replacing the non-original window with something more appropriate.
Investigate original paint colours when due for a repaint.

Heritage Act Categories

Heritage Item Groups

Heritage Item Categories

Title Details

Architect/Designers

Unknown

Builders/Makers

Unknown

Physical Description

A single storey timber cottage, L-shaped in plan with a projecting gable wing and a verandah, the roof of which is integral to the house. The roof is clad with galvanised corrugated steel. The window in the gable is a tri-partite, timber-framed double hung sash while the

HPD Number 102

HI Number

VHR Number

Other Names/s

Precinct

Group Number

Extra Files

window behind the verandah appears to be not original.

Physical Condition and/or Archaeological Potential

Good

Usage Residence/Holiday House.

Associated People**Historical Notes**

The first leasehold in South West Gippsland was obtained by George Raff in 1842, but this was later absorbed into George Black's Tarwin Meadows Run in 1851. Black later cleared the land for grazing and farming. When cattle runs were opened for farming by the Land Act of 1869, selections made in South West Gippsland included Inverloch.

The seaside town of Inverloch was first named Anderson's Inlet after the first permanent European settler in Western Port, Samuel Anderson. A lowland Scot, Anderson had worked for the Van Diemen's Land Company until he sailed across Bass Strait in 1835 and settled on the Bass River. Here he successfully grew wheat and encouraged his brothers from Scotland to join him. The township of Anderson Inlet was proclaimed in 1886, and renamed Inverloch in 1889, presumably in honour of the departure of Sir Henry Brougham Loch, Governor of Victoria from 1884-89. The nearby township of Loch, was also named after the Governor. The name also derives from the Gaelic 'inver' meaning 'at the entrance to' and 'loch', meaning 'lake'.

Inverloch developed as a fishing village and as a small-ship port to service the farms being established around the Inlet. By the late nineteenth century it was established as both a seaside resort and a port for transporting local produce to Melbourne. In the 1890s, when coalmines were opened in Korumburra, Outtrim and Jumbunna, Inverloch was the nearest seaside holiday resort. When the State Coal Mine opened at Wonthaggi in 1909, the coal was initially shipped to Melbourne from Inverloch until the Nyora-Wonthaggi line was opened in 1910. Many of the mine-workers lived in Inverloch, and cycled to Wonthaggi every day. When the mine closed in 1968, some of the miners' cottages were transported to Inverloch as holiday homes.

This house is situated on land that was part of the original 19 acre holding of Allotment 15A of 1, Section 1 at Inverloch. The property was purchased by Jacob Thomas in 1883 and was the first town block in Inverloch. Details of further subdivision have not come to light, and it is unclear if an earlier residence existed on the site prior to the construction of this house which dates from the c.1920s.

Historic Themes**Thematic Environmental History**

13.2 Coastal Towns and 13.3 Tourist Resorts: The coastal town of Inverloch, established on Anderson's Inlet in 1886, became a popular resort in the late nineteenth century with locals from mining districts, and from 1909, with miners from Wonthaggi. When roads and motor transport became more accessible in the 1930s and 1940s, it became popular with holidaymakers from Melbourne. Families enjoyed holidays of four weeks or more in the same rented house, and many families stayed in the area until Easter. Many holiday residents have retired to Inverloch permanently.

Listings**References**

Author	Title	Year	ShelfLocation
E P Brewster (ed.)	Looking Back at Inverloch	1988	
Inverloch Historical Society Inc.	Anderson Inlet Inverloch: A Short A-Z History	1997	
Les Blake	Place Names of Victoria	1974	
Les Blake	Vision & Realisation, Vol. 3	1973	
Norman R Deacon (ed.)	Anderson Inlet Inverloch: Inverloch and District Identities and Pioneers	2000	
R V Billis and A S Kenyon	Pastoral Pioneers of Port Phillip	1974	
Thomas Horton and Kenneth Morris	The Andersons of Western Port	1983	

Conservation Plans**Owner Type****Section 32 Recommendation**

HOUSE

Heritage Overlay No **HO89**

PropertyNo

File Number

Heritage Study No **Stage 2**

Heritage Grading

HPD Number 102

HI Number

VHR Number

Other Names/s

Precinct

Group Number

Extra Files

Owners/Occupants/Managers

Other Notes

Application Detail

Adviser Comments

Planning Scheme Amendments

Overlay Controls

Planning Scheme Schedule

External Paint Controls? No

Included in Vic Heritage Register? No

External Alteration Controls? No

Prohibited uses may be permitted? Yes

Tree Controls? No

Name of incorporated plan No

Outbuildings/fences not exempt? No

Aboriginal Heritage Place? No