

# HERITAGE PLACE

**NAME OF PLACE:** HOUSE

**ADDRESS/LOCATION OF PLACE:** 4 Hopetoun Street INVERLOCH

**STUDY NUMBER:** 166

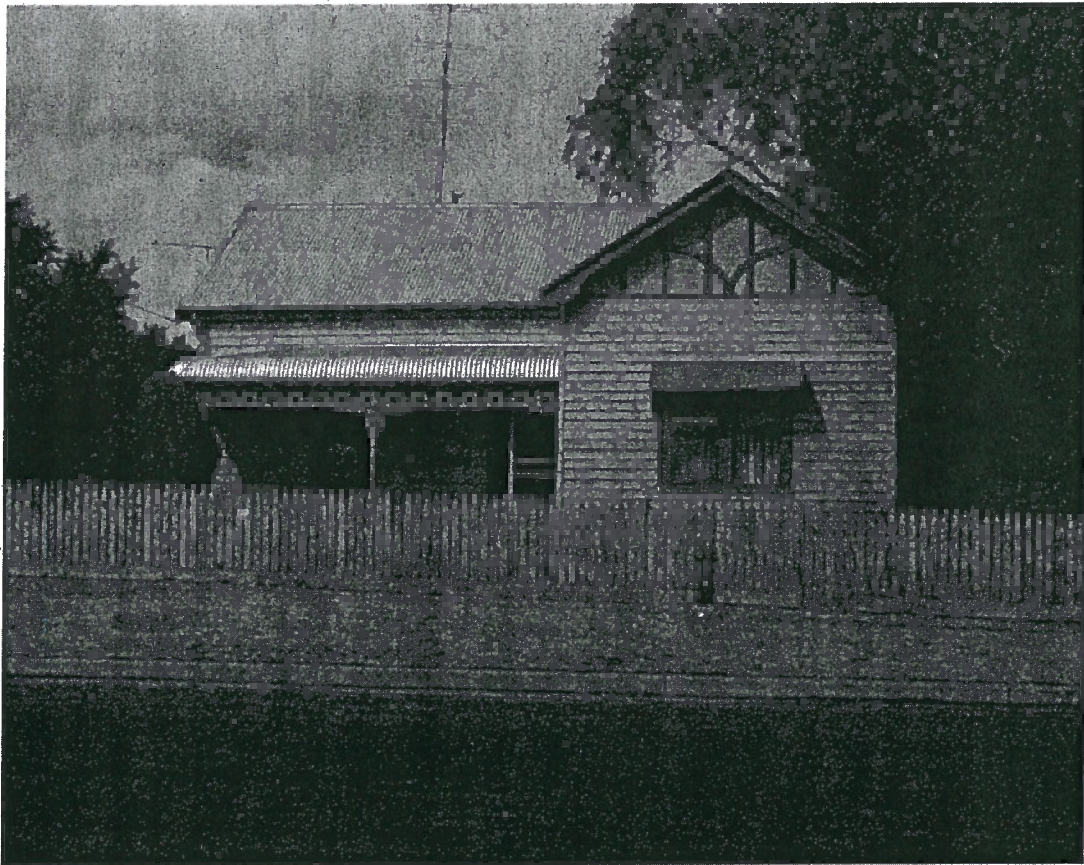
**HERITAGE OVERLAY NUMBER:** HO94

---

**LOCAL GOVERNMENT AREA:** Bass Coast Shire

**PARISH:** PARISH OF KIRRAK

**SIGNIFICANCE RATING:** Local



House, 4 Hopetoun Street, Inverloch

**Image Date:** March 2002

**EXTENT OF LISTING:**

Whole allotment.

**HOUSE**

Heritage Overlay No **HO94**

PropertyNo

File Number

Heritage Study No **166**

Heritage Grading

HPD Number **174**

HI Number

VHR Number

Other Names/s

Precinct

Group Number

Extra Files

Location **4 Hopetoun Street INVERLOCH**

PARISH OF KIRRAK

COUNTY OF BULN BULN

INVERLOCH (T)

Planning Authority

Ward **Townsend**

Access Description

Map Number

**0**

Map Scale **1:100000**

Latitude

Longitude

UMG Zone

Easting

Northing

Location Validity

Spatial Accuracy

Extent of Listing

Whole allotment.

Published Extent of Listing

Significance **Local**

Statement of Significance

The house at 4 Hopetoun Street is of local historic and aesthetic significance. The site is historically significant as part of the original landholding of one of the earliest settlers in Inverloch, Jacob Thomas. The villa is demonstrative of the aspirations and means of the early residents in the area, and provides evidence of an early phase of Inverloch's settlement. The house is aesthetically significant as a largely intact example of a late-Victorian or early-Edwardian style villa constructed as a residence in a seaside township.

Gazettal Details

Permit Exemptions

Exemptions Policy

Assessment Against Criteria

A.4 Importance for association with events, developments or cultural phases which have had a significant role in the human occupation and evolution of the nation, State, region or community.

AHC E.1 Importance for a community for aesthetic characteristics held in high esteem or otherwise valued by the community.

Date Assessed **10/08/2004** Assessed By **F Woodhouse**

Comparisons

Rare Assessment

Intact Assessment

Include in VHR  Include in RNE  Include in Local Planning Scheme   No Recommendations for Inclusions

Recommended Management

Investigate original paint colours when due for a repaint.

Heritage Act Categories

Heritage Item Groups

Heritage Item Categories

Title Details

Architect/Designers

Unknown

Builders/Makers

Unknown

Physical Description

# HOUSE

Heritage Overlay No HO94

Property No

File Number

Heritage Study No 166

Heritage Grading

HPD Number 174

HI Number

VHR Number

Other Names/s

Precinct

Group Number

Extra Files

The house at 4 Hopetoun Street Inverloch, is a single-storey double-fronted Edwardian weatherboard villa with a gabled corrugated galvanised steel roof with bracketed eaves. The bullnosed front verandah is supported on turned timber posts with a timber fretwork valance. The window behind the verandah is a timber-framed double-hung sash. The verandah is flanked by a projecting half-timbered gabled bay with pressed metal infill behind strapwork and a paired timber-framed double-hung sash window with a pressed metal awning. The picket fence provides a picturesque element.

## Physical Condition and/or Archaeological Potential

Good

Usage Residence/Holiday House

Associated People

## Historical Notes

The first leasehold in South West Gippsland was obtained by George Raff in 1842, but this was later absorbed into George Black's Tarwin Meadows Run in 1851. Black later cleared the land for grazing and farming. When cattle runs were opened for farming by the Land Act of 1869, selections made in South West Gippsland included Inverloch.

The seaside town of Inverloch was first named Anderson's Inlet after the first permanent European settler in Western Port, Samuel Anderson. A lowland Scot, Anderson had worked for the Van Diemen's Land Company until he sailed across Bass Strait in 1835 and settled on the Bass River. Here he successfully grew wheat and encouraged his brothers from Scotland to join him. The township of Anderson Inlet was proclaimed in 1886, and renamed Inverloch in 1889, presumably in honour of the retirement of Sir Henry Brougham Loch, Governor of Victoria from 1884-89. The nearby township of Loch, was also named after the Governor. The name also derives from the Gaelic 'inver' meaning 'at the entrance to' and 'loch', meaning 'lake'.

Inverloch developed as a fishing village and as a small-ship port to service the farms being established around the Inlet. By the late nineteenth century it was established as both a seaside resort and a port for transporting local produce to Melbourne. In the 1890s, when coalmines were opened in Korumburra, Outtrim and Jumbunna, Inverloch was the nearest seaside holiday resort. When the State Coal Mine opened at Wonthaggi in 1909, the coal was initially shipped to Melbourne from Inverloch until the Nyora-Wonthaggi line was opened in 1910. Many of the mine-workers lived in Inverloch, and cycled to Wonthaggi every day. When the mine closed in 1968, some of the miners' cottages were transported to Inverloch as holiday homes.

Hopetoun Street was named after John Adrian Louis Hope, Lord Hopetoun, 7th Earl of Linlithgow, Governor of Victoria from 1889-1895 who succeeded Sir Henry Loch. The house at 4 Hopetoun Street, Inverloch is built on part of the original Allotment 15A of Section 1, Township of Inverloch. It was the first town block, consisting of 19 acres, and purchased by Jacob Thomas on 25 April 1883, with the title transferred on 25 May 1883. The large allotment appears to have been subdivided at the turn of the century, and this house, which dates from the early c.1900s, may be one of the earliest built in the street.

## Historic Themes

### Thematic Environmental History

13.2 Coastal Towns and 13.3 Tourist Resorts: The coastal town of Inverloch, established on Anderson's Inlet in 1886, became a popular resort in the late nineteenth century with locals from mining districts, and from 1909, with miners from Wonthaggi. When roads and motor transport became more accessible in the 1930s and 1940s, it became popular with holidaymakers from Melbourne. Families enjoyed holidays of four weeks or more in the same rented house, and many families stayed in the area until Easter. Many holiday residents have retired to Inverloch permanently.

## Listings

### References

Author	Title	Year	Shelf Location
E P Brewster (ed.)	Looking Back at Inverloch	1988	
Inverloch Historical Society Inc.	Anderson Inlet Inverloch: A Short A-Z History	1997	
Les Blake	Place Names of Victoria	1974	
Les Blake	Vision & Realisation, Vol. 3	1973	
Norm Deacon, Inverloch Historical Society, pers comm.			
Norman R Deacon (ed.)	Anderson Inlet Inverloch: Inverloch and District Identities and Pioneers	2000	
R V Billis and A S Kenyon	Pastoral Pioneers of Port Phillip	1974	

**HOUSE**

Heritage Overlay No **HO94**

Property No

File Number

Heritage Study No **166**

Heritage Grading

HPD Number **174**

HI Number

VHR Number

Other Names/s

Precinct

Group Number

Extra Files

Thomas Horton and Kenneth Morris    The Andersons of Western Port

1983

Conservation Plans

Owner Type

Section 32 Recommendation

Owners/Occupants/Managers

Other Notes

Application Detail

viser Comments

Planning Scheme Amendments

Overlay Controls

Planning Scheme Schedule

External Paint Controls?    No

Included in Vic Heritage Register? No

Internal Alteration Controls?    No

Prohibited uses may be permitted? Yes

Tree Controls?    No

Name of incorporated plan No

Outbuildings/fences not exempt?    No

Aboriginal Heritage Place? No