

HERITAGE PLACE

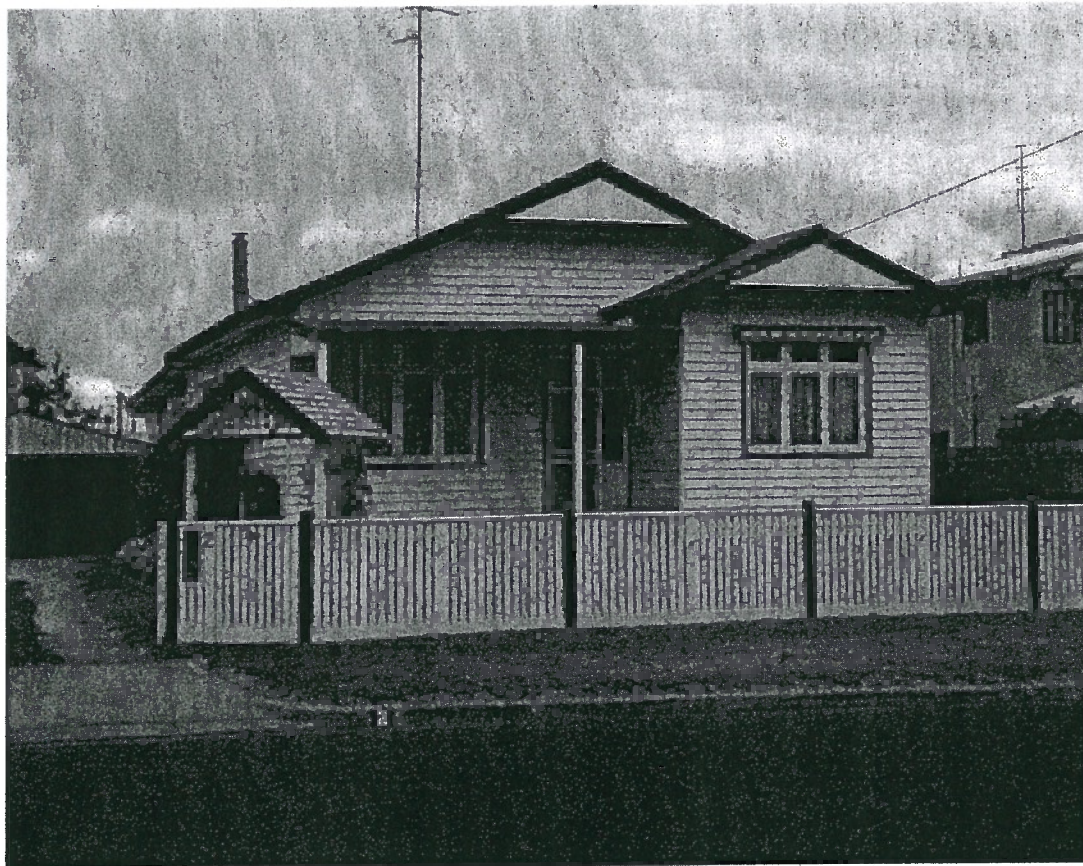
NAME OF PLACE: HOUSE

ADDRESS/LOCATION OF PLACE: 2 Pier Road INVERLOCH

STUDY NUMBER: 156

HERITAGE OVERLAY NUMBER: HO96

LOCAL GOVERNMENT AREA: Bass Coast Shire



House, 2 Pier Road, Inverloch.

Image Date: March 2002

EXTENT OF LISTING:

Whole allotment.

HOUSE

Heritage Overlay No **HO96**

PropertyNo

File Number

Heritage Study No **156**

Heritage Grading

HPD Number 179

HI Number

VHR Number

Other Names/s

Precinct

Group Number

Extra Files

Location 2 Pier Road INVERLOCH

Planning Authority

Ward

Access Description

Map Number 0

Map Scale 1:100000

Latitude

Longitude

UMG Zone

Easting

Northing

Location Validity

Spatial Accuracy

Extent of Listing

Whole allotment.

Published Extent of Listing

Significance

Statement of Significance

The house at 2 Pier Road is of local historic and aesthetic significance. The site is historically significant as part of the original landholding of one of the earliest settlers in Inverloch, Jacob Thomas. The cottage is demonstrative of the aspirations and means of the later settlers in the area, and provides evidence of an early subsequent of Inverloch's settlement. The house is aesthetically significant as a largely intact example of a 1920s cottage.

Gazettal Details

Permit Exemptions

Exemptions Policy

Assessment Against Criteria

A.4 Importance for association with events, developments or cultural phases which have had a significant role in the human occupation and evolution of the nation, State, region or community.

Date Assessed 11/08/2004 Assessed By F Woodhouse

Comparisons

Rare Assessment

Intact Assessment

Good.

Include in VHR Include in RNE Include in Local Planning Scheme. No Recommendations for Inclusions

Recommended Management

Heritage Act Categories

Heritage Item Groups

Heritage Item Categories

Heritage place

Residential buildings (private)

House

Title Details

Physical Description

The double-fronted, double-gabled, inter-War house has a corrugated, galvanised steel roof penetrated by one chimney. There is a projecting gabled bay with a tripartite casement windows which mirrors that of the recessed main wing which contains a part glazed door with high and side lights. An extension appears to have been added to the rear as the roof-line, visible from the street, differs from the original.

Physical Condition and/or Archaeological Potential

Good

Usage Residence.

HOUSE

Heritage Overlay No HO96

PropertyNo

File Number

Heritage Study No 156

Heritage Grading

HPD Number 179

HI Number

VHR Number

Other Names/s

Precinct

Group Number

Extra Files

Associated People

Historical Notes

The first leasehold in South West Gippsland was obtained by George Raff in 1842, but this was later absorbed into George Black's Tarwin Meadows Run in 1851. Black later cleared the land for grazing and farming. When cattle runs were opened for farming by the Land Act of 1869, selections made in South West Gippsland included Inverloch.

The seaside town of Inverloch was first named Anderson's Inlet after the first permanent European settler in Western Port, Samuel Anderson. A lowland Scot, Anderson had worked for the Van Diemen's Land Company until he sailed across Bass Strait in 1835 and settled on the Bass River. Here he successfully grew wheat and encouraged his brothers from Scotland to join him. The township of Anderson Inlet was proclaimed in 1886, and renamed Inverloch in 1889, in honour of Sir Henry Brougham Loch, Governor of Victoria from 1884-89. The nearby township of Loch, was also named after the Governor. The name also derives from the Gaelic 'inver' meaning 'at the entrance to' and 'loch', meaning 'lake'.

Inverloch developed as a fishing village and as a small-ship port to service the farms being established around the Inlet. By the late nineteenth century it was established as both a seaside resort and a port for transporting local produce to Melbourne. In the 1890s, when coalmines were opened in Korumburra, Outtrim and Jumbunna, Inverloch was the nearest seaside holiday resort. When the State Coal Mine opened at Wonthaggi in 1909, the coal was initially shipped to Melbourne from Inverloch until the Nyora-Wonthaggi line was opened in 1910. Many of the mine-workers lived in Inverloch, and cycled to Wonthaggi every day. When the mine closed in 1968, some of the miners' cottages were transported to Inverloch as holiday homes.

The land in Pier Road was originally subdivided in 1887, and the extensive block of 46 acres, 3 roods and 5 perches was owned by C Dunkley. This section of Inverloch appears to have been developed much later than the original township, and occurred early in the twentieth century. Known as 'Kipling', this house was built in the c.1920s by the proprietor of the Calendonian Hotel in Wonthaggi, Mr Paddy Webb. It was later owned by Myrtle Bartlett.

Historic Themes

13.2 Coastal Towns and 13.3 Tourist Resorts: The coastal town of Inverloch, established on Anderson's Inlet in 1886, became a popular resort in the late nineteenth century with locals from mining districts, and from 1909, with miners from Wonthaggi. When roads and motor transport became more accessible in the 1930s and 1940s, it became popular with holidaymakers from Melbourne. Families enjoyed holidays of four weeks or more in the same rented house, and many families stayed in the area until Easter. Many holiday residents have retired to Inverloch permanently.

Listings

References

| Author | Title | Year | Shelf | Location |
|------------------------------|---|------|-------|----------|
| Inverloch Historical Society | Anderson Inlet Inverloch: A Short A-Z History | 1997 | | |

Conservation Plans

Owner Type

Section 32 Recommendation

Owners/Occupants/Managers

Other Notes

Application Detail

Adviser Comments

Planning Scheme Amendments

Overlay Controls

Planning Scheme Schedule

External Paint Controls? No Included in Vic Heritage Register? No

Internal Alteration Controls? No Prohibited uses may be permitted? Yes

HOUSE

Heritage Overlay No HO96

PropertyNo

File Number

Heritage Study No 156

Heritage Grading

HPD Number 179

HI Number

VHR Number

Other Names/s

Precinct

Group Number

Extra Files

Tree Controls? No

Name of incorporated plan No

Outbuildings/fences not exempt? No

Aboriginal Heritage Place? No