

# THEATRE SEATING LAYOUT

## STAGE

ORCHESTRA



AISLE

A

1	2	3	4	5	6	7	8	9	10	11	12	13	14	15	16	17	18	19
---	---	---	---	---	---	---	---	---	----	----	----	----	----	----	----	----	----	----

A

AISLE

B

1	2	3	4	5	6	7	8	9	10	11	12	13	14	15	16	17	18	19	20
---	---	---	---	---	---	---	---	---	----	----	----	----	----	----	----	----	----	----	----

B

C

1	2	3	4	5	6	7	8	9	10	11	12	13	14	15	16	17	18	19	20	21
---	---	---	---	---	---	---	---	---	----	----	----	----	----	----	----	----	----	----	----	----

C

D

1	2	3	4	5	6	7	8	9	10	11	12	13	14	15	16	17	18	19	20	21	22
---	---	---	---	---	---	---	---	---	----	----	----	----	----	----	----	----	----	----	----	----	----

D

E

1	2	3	4	5	6	7	8	9	10	11	12	13	14	15	16	17	18	19	20	21	22	23
---	---	---	---	---	---	---	---	---	----	----	----	----	----	----	----	----	----	----	----	----	----	----

E

F

1	2	3	4	5	6	7	8	9	10	11	12	13	14	15	16	17	18	19	20	21	22	23	24
---	---	---	---	---	---	---	---	---	----	----	----	----	----	----	----	----	----	----	----	----	----	----	----

F

G

1	2	3	4	5	6	7	8	9	10	11	12	13	14	15	16	17	18	19	20	21	22	23	24	25
---	---	---	---	---	---	---	---	---	----	----	----	----	----	----	----	----	----	----	----	----	----	----	----	----

G

H

1	2	3	4	5	6	7	8	9	10	11	12	13	14	15	16	17	18	19	20	21	22	23	24	25	26
---	---	---	---	---	---	---	---	---	----	----	----	----	----	----	----	----	----	----	----	----	----	----	----	----	----

H



## CENTRE AISLE



J	1	JW2	JW3	4	5	6	7	8	9	10	11	12	13	14	15	16	17	18	19	JW20	JW21	22	J
---	---	-----	-----	---	---	---	---	---	---	----	----	----	----	----	----	----	----	----	----	------	------	----	---

K

1	2	3	4	5	6	7	8	9	10	11	12	13	14	15	16	17	18	19	20	21	22	23	24	25	26	27
---	---	---	---	---	---	---	---	---	----	----	----	----	----	----	----	----	----	----	----	----	----	----	----	----	----	----

K

L

1	2	3	4	5	6	7	8	9	10	11	12	13	14	15	16	17	18	19	20	21	22	23	24	25	26
---	---	---	---	---	---	---	---	---	----	----	----	----	----	----	----	----	----	----	----	----	----	----	----	----	----

L

M

1	2	3	4	5	6	7	8	9	10	11	12	13	14	15	16	17	18	19	20	21	22	23	24	25	26	27
---	---	---	---	---	---	---	---	---	----	----	----	----	----	----	----	----	----	----	----	----	----	----	----	----	----	----

M

AISLE

N

1	2	3	4	5	6	7	8	9	10	11	12	13	14	15	16	17	18	19	20	21	22	23	24	25	26
---	---	---	---	---	---	---	---	---	----	----	----	----	----	----	----	----	----	----	----	----	----	----	----	----	----

N

P

1	2	3	4	5	6	7	8	9	10	11	12	13	14	15	16	17	18	19	20	21	22	23	24	25	26	27
---	---	---	---	---	---	---	---	---	----	----	----	----	----	----	----	----	----	----	----	----	----	----	----	----	----	----

P

Q

1	2	3	4	5	6	7	8	9	10	11	12	13	14	15	16	17	18	19	20	21	22	23	24	25	26
---	---	---	---	---	---	---	---	---	----	----	----	----	----	----	----	----	----	----	----	----	----	----	----	----	----

Q

R

1	2	3	4	5	6	7	8	9	10	11	12	13	14	15	16	17	18	19	20	21	22	23	24	25	26	27
---	---	---	---	---	---	---	---	---	----	----	----	----	----	----	----	----	----	----	----	----	----	----	----	----	----	----

R

S

1	2	3	4	5	6	7	8	9	10	11	12	13	14	15	16	17	18	19	20	21	22	23	24	25	26	27	28
---	---	---	---	---	---	---	---	---	----	----	----	----	----	----	----	----	----	----	----	----	----	----	----	----	----	----	----

S

AISLE

## REAR OF THEATRE



**EXIT/  
ENTRY**

3 Locations



**PERMANENT  
WHEELCHAIR**

4 Seating Spaces

\*plus 5 additional with prior notice



**LIFT  
ACCESS**



**HEARING  
LOOP**

Available in Row G



**WC**

Facilities located  
on Ground Floor

## Wonthaggi Union Community Arts Centre

96 Graham St, Wonthaggi 3995

phone: 03 5671 2178

# THEATRE SPECIFICATIONS

## STAGE

Behind proscenium arch  
Area (hwd): 10m x 19m x 12.6m  
Apron (wd): 8.7m x 2.8m  
Proscenium Arch (hw): 4.8m x 9.9m

### STAGE ACCESS

Direct access available  
Dock Door (hw): 3.7m x 2.2m  
Access from rear lane to scenery dock then onto stage level  
Fly Floor: access by stairway  
Prompt Corner: Q light system  
Communication System: headphones  
Stage Surface: timber (paintable)

### STAGE PATCHING

20 Audio sends  
12 Audio returns  
20 Audio Category 7 Patch  
12 Audio filtered power  
18 x Stage Lighting outlets

## AUDIO

### MICROPHONE AND STAGE GEAR

6 x Sennheiser Radio Microphone SKM 500 G3  
4 x Sennheiser Microphone wired  
2 x Sennheiser Microphone Instrument wired  
2 x Sennheiser Wireless Presentation Set lapel microphone  
5 x XLR audio connectors male-male  
6 x XLR audio connectors female-female  
3 x XLR guitar jack connector  
2 x Guitar jack extension connector  
2 x DI Box  
2 x Radial Pro DI Box  
1 x Radial Pro DI Box stereo  
1 x Lectrum Aero Lectern  
2 x Digital Audio loom 15m  
10 x Audio Lead Analogue 5m  
10 x Audio Lead analogue 10m  
3 x Microphone Stand 3 leg ( Silver)  
6 x Microphone stand K & M boom (Black)  
2 x Microphone stand K & M low level (Black)

### MIXING CONSOLE AND HOUSE COMMS

1 x Allen & Heath QU 32 Audio Mixing Console  
2 x Allen & Heath AB168 AudioRack  
8 x ASL PS19 belt pack with Maestro Headset  
8 x Audio lead XLR to suit headset blue

### SPEAKERS AND FOLDBACKS

4 x EAW SB528 subwoofers  
3 x QX 594i Top speakers  
4 x EAW Radius RSSX Fold back speakers  
12" self powered

## LIGHTING

### LIGHTS

18 x Chauvet Ovation E910FC LED profile  
10 x Selecon Rama LED Fresnel 3200K  
6 x Selecon Acclaim 18/34 600W Axial Mk11  
12 x Selecon Acclaim 650W Fresnel  
20 x Phillips Showline SLI55 LED RGBAW+UV parcans  
6 x Showpro LED Cyc 101 RGBAL  
6 x Selecon Pacific 1000W 23/50 Profiles  
6 x Selecon Acclaim Axial 22/44 Zooms 600W  
2 x Harmony 15/28 1000W Profiles spots  
2 x Prelude Fresnel 500W  
8 x ETC Source 4 Junior 575W 25/50  
12 x ShowPro LED Par64 Tri-colour CAN Black  
2 x iLEDCycLED144 RGBWA Strip  
4 x Proshop Pin spot  
2 x Pacific Follow Spot 80V dmx enabled with road case

### OTHER STAGE GEAR

1 x Epson EB-G7905U Data Projector  
1 x Unique 2 Hazer  
3 x LSC DMX splitter

### DIMMER CONTROL

48 x 10amp dimmer rack

### LIGHTING OUTLETS

4 overhead bars  
LX1 = 18 Patches  
LX2 = 12 Patches  
LX3 = 12 Patches  
LX4 = 12 Patches  
24 total on auditorium bridges  
2 bridges & 12 outlets

## DRESSING ROOMS

2 x Dressing rooms adjoined to stage area  
Area (wd): 6.3m x 4.4m  
Separate toilet and shower facilities

### ACCESS

Via sound lock corridors to wings prompt and O.P.  
Additional dressing facilities in Project Space

## STAGE MANAGER'S COMMUNICATION SYSTEM

Stage Manager's console prompt side of stage with the following facilities;  
Cue lights and intercom headset outlets at service areas  
Overhead stage microphone to dressing rooms  
Digital real time check  
Digital elapsed time clock  
Stage Manager's mic for paging  
Chime button for audience recall in foyer  
Paging and performance speakers to 2 dressing rooms  
Wall handset telephone intercom between stage stalls control room and Manager's office  
Beltpack/Power supplies and intercom headsets for use in allocated service areas  
Hearing loop available for row G only

## ORCHESTRA PIT

Area (wd): 4.0m x 8.4m x 2.0m  
8 mic sends & 4 mic returns points  
12 lighting outlets  
10 Category 7 RJ45 Patches  
4 Audio filtered power

## PIANO

Yamaha baby grand piano available

## PROJECTION

Cinema operates within the theatre also  
Onstage Projector is available

## MERCHANDISING

Available in foyer, fees apply

## BOOKINGS & BOX OFFICE

Located at the Centre  
96 Graham St, Wonthaggi 3995  
Hours: Monday-Friday 10am-4pm  
03 5671 2178  
[www.trybooking.com/eventlist/wucac](http://www.trybooking.com/eventlist/wucac)

## PUBLICITY & PROMOTION

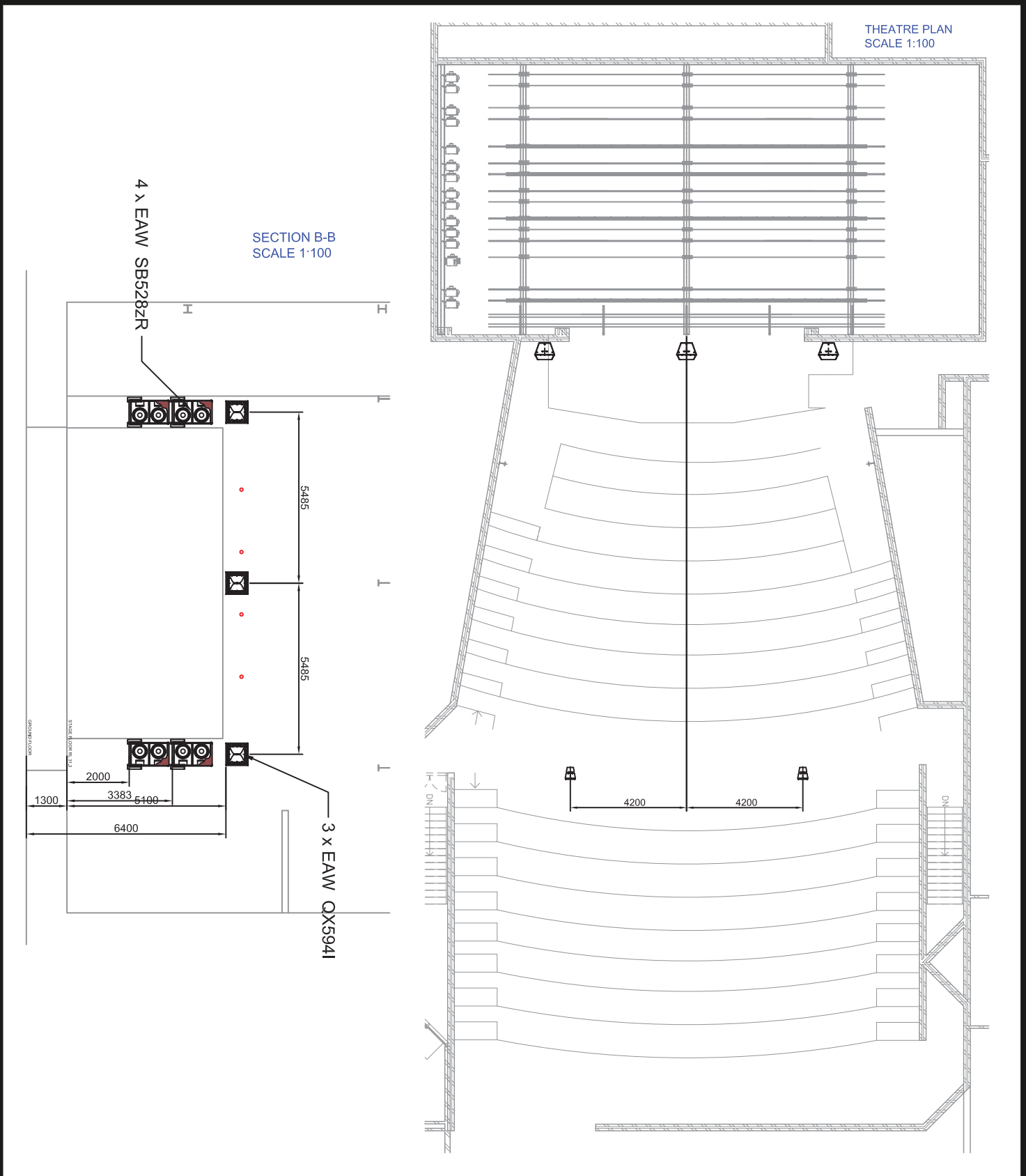
Please contact the Centre for further information about Publicity & Promotion  
Hours: Monday-Friday 10am-4pm  
03 5671 2178

## Wonthaggi Union Community Arts Centre

96 Graham St, Wonthaggi 3995  
phone: 03 5671 2178



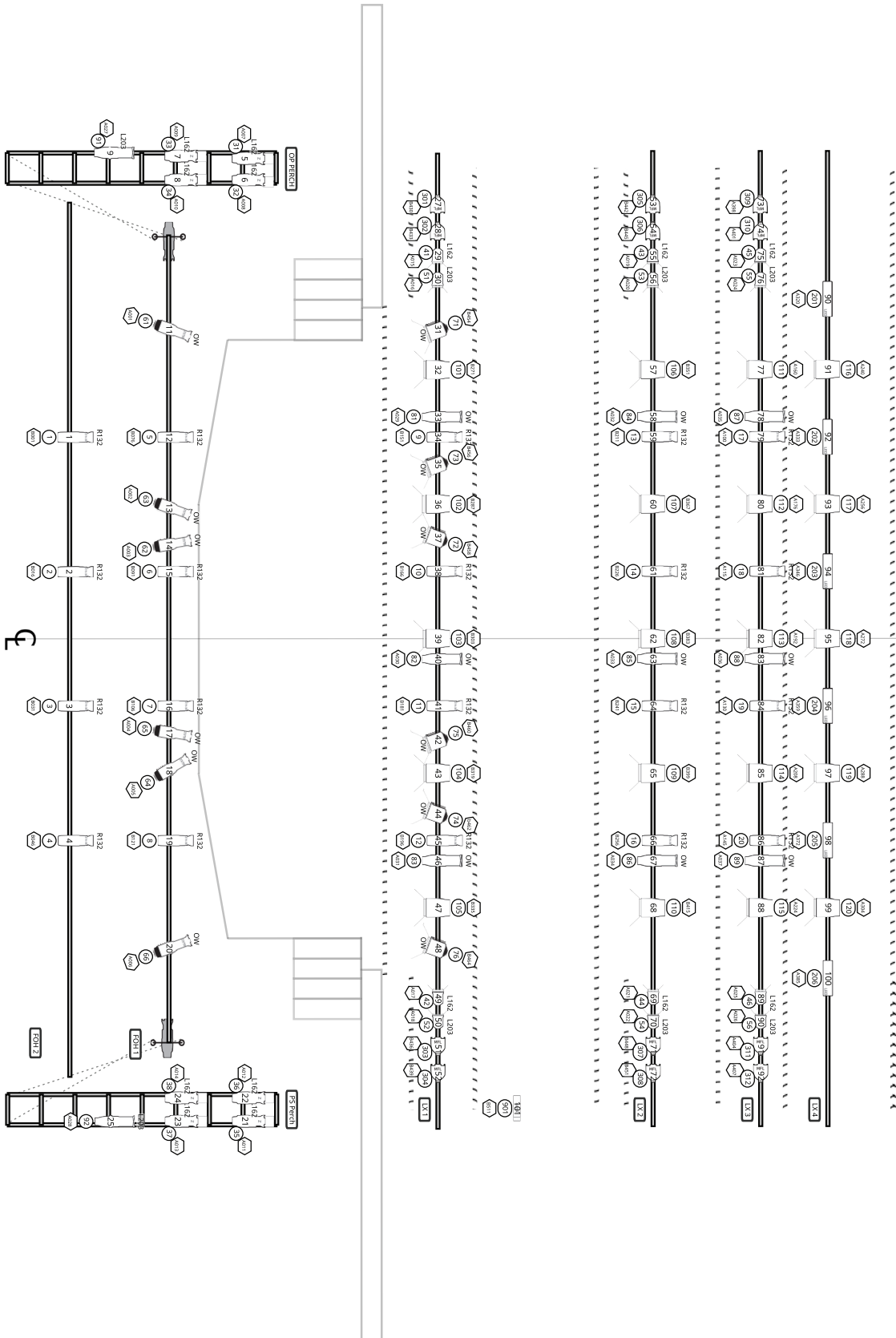
# THEATRE SPECIFICATIONS



## Wonthaggi Union Community Arts Centre

96 Graham St, Wonthaggi 3995  
phone: 03 5671 2178

# THEATRE SPECIFICATIONS



**SYMBOL KEY**

- Source 4 Jr Zoom 25-55
- Chauvet Quation E91DFC (15ch Mode)
- Selecon Pacific 23-50" 1Kw
- Selecon Acclaim 18/34 600w
- Selecon Rama Fresnel LED
- Selecon Acclaim Fresnel 650w
- TriLED RGB (Mode 3)
- Phillips Showline SL155 Zoom (16-Bit Mode)
- Showpro LED CYC2 (Pixel 2 Mode)
- Hazer UniLuge 2
- 10" Barndoor
- 6" Barndoor
- Tophat 8"

**TYPICAL UNIT**

SCROLLER  
UNIT # 23  
TEMPLATE  
CHANNEL # 42

\*PS and OP Positions are indicative only. All lenses to be hung as close to the stage as possible, depending downwards.

## Wonthaggi Union Community Arts Centre

96 Graham St, Wonthaggi 3995  
phone: 03 5671 2178

