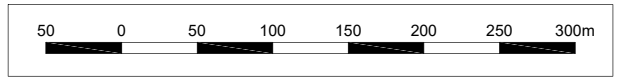
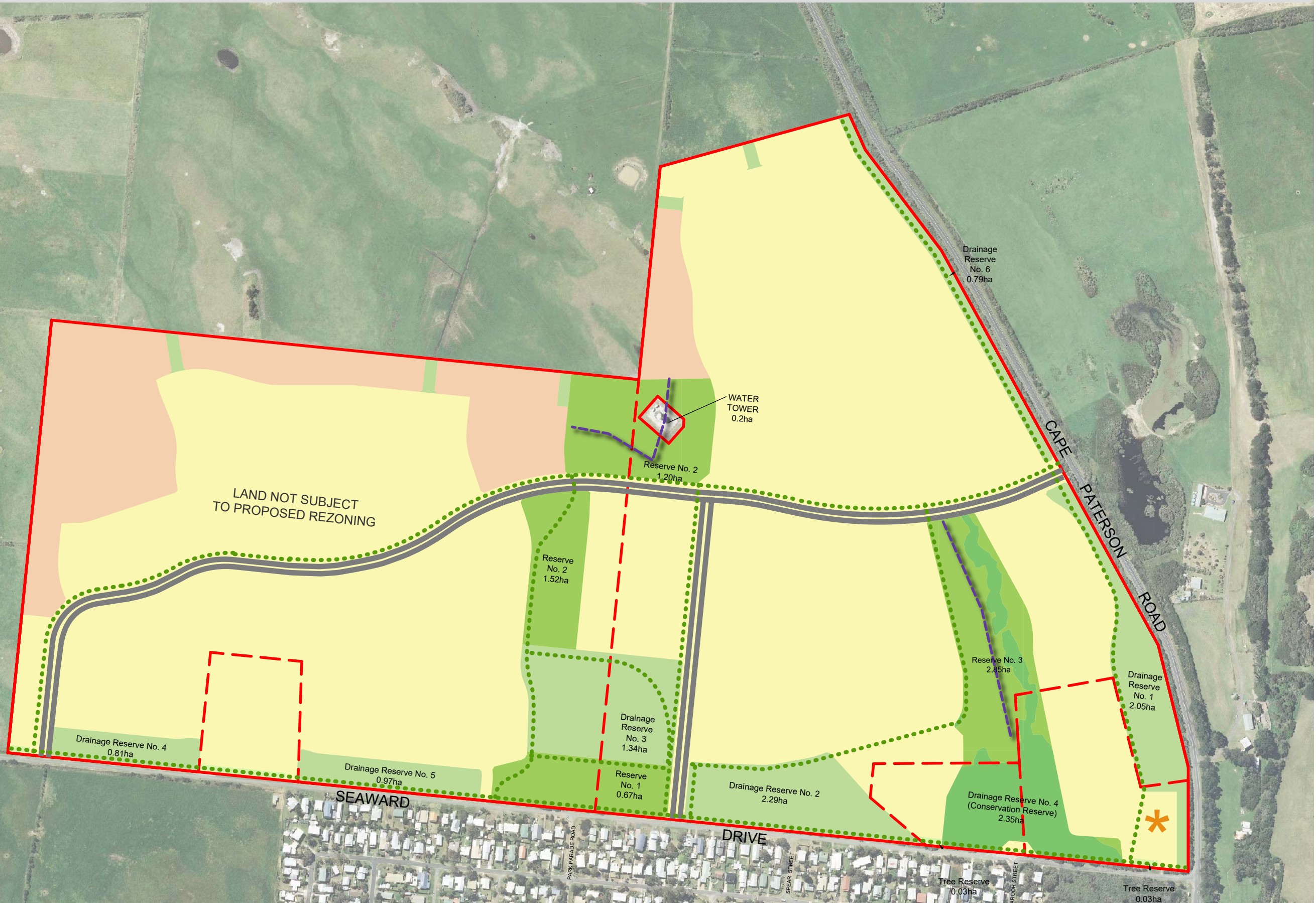


**LEGEND**

- Site boundary
- Internal Title Boundary
- Lots (sizes to respond to slope)
- Standard Density Lots <1000m<sup>2</sup>
- Encumbered Open Space - Drainage reserve
- Unencumbered public open space
- Native vegetation to be retained
- Tree Reserve
- Collector street
- Shared path
- Main ridge line with in openspace
- Community/commercial investigation area



Indicative Cape Paterson North Development Plan  
Seaward Drive, Cape Paterson

Wallis Watson

**BW** Beveridge Williams  
development & environmental consultants  
Melbourne ph : 03 9524 8888  
www.beveridgewilliams.com.au

Version	02	 Scale (A1): 1:2500 (A3): 1:5000
Date	10.12.2019	

K:\Jobs Data\3927 WW Cape Paterson\_Lan\00\Illustrator