



Imaged Document Cover Sheet

The document following this cover sheet is an imaged document supplied by LANDATA®, Victorian Land Registry Services.

Document Type	Plan
Document Identification	LP033819
Number of Pages (excluding this cover sheet)	3
Document Assembled	17/08/2020 12:39

Copyright and disclaimer notice:

© State of Victoria. This publication is copyright. No part may be reproduced by any process except in accordance with the provisions of the Copyright Act 1968 (Cth) and for the purposes of Section 32 of the Sale of Land Act 1962 or pursuant to a written agreement. The information is only valid at the time and in the form obtained from the LANDATA® System. None of the State of Victoria, LANDATA®, Victorian Land Registry Services Pty. Ltd. ABN 86 627 986 396 as trustee for the Victorian Land Registry Services Trust ABN 83 206 746 897 accept responsibility for any subsequent release, publication or reproduction of the information.

The document is invalid if this cover sheet is removed or altered.

PLAN OF SUBDIVISION OF PART OF CROWN ALLOTMENTS 10,11&12 PARISH OF PHILLIP ISLAND

LP 33819

EDITION 5
PLAN APPROVED 27/7/1856

COUNTY OF MORNINGTON

VOL 7317 FOL 325
7481 153
8174 900 - 901

Measurements are in Feet & Inches
Conversion Factor
FEET x 0.3048 = METRES

ENCUMBRANCES
AS TO THE LAND MARKED E-8 AND E-9 THE
CARRIAGEWAY EASEMENT CREATED IN A.8577
AS TO THE LAND MARKED E-8 NOTIFICATION
OF AN EASEMENT (DRAINAGE) SECTION 19
LAND ACQUISITION & COMPENSATION ACT
1986 CREATED IN W546613P IN FAVOUR OF
BASS COAST SHIRE COUNCIL

AS TO PART OF THE ROAD R1:
THE DRAINAGE & SEWERAGE EASEMENT
VIDE L.P. 19099 AND THE EASEMENTS
CREATED IN INST. No.'s 2696549 & A8577

COLOUR CODE

E-1 = BLUE
E-2 = GREEN
R1 = BROWN
A-1 = YELLOW

APPROPRIATIONS

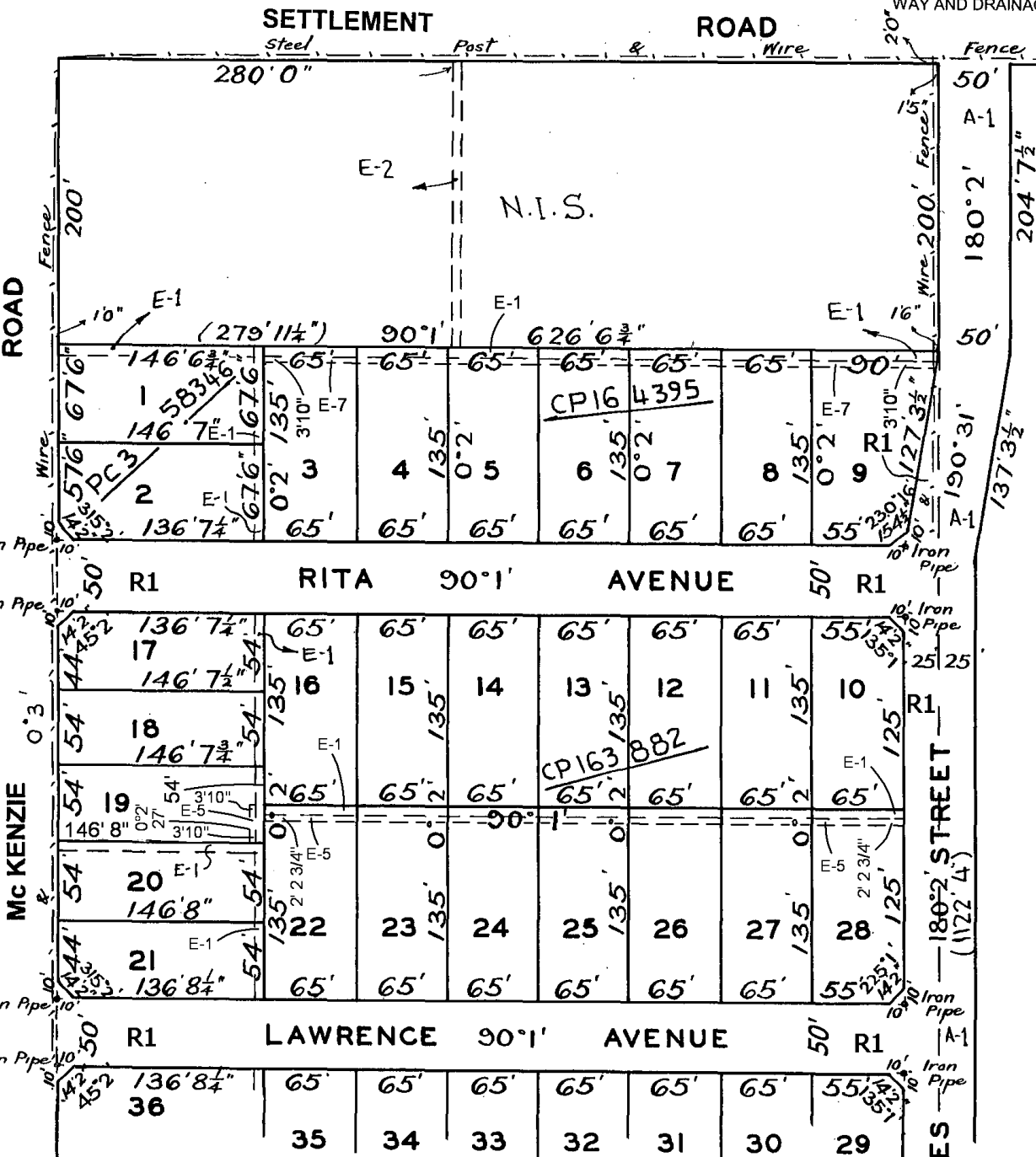
THE LAND COLOURED BLUE
IS APPROPRIATED OR SET
APART FOR EASEMENTS OF
DRAINAGE AND SEWERAGE
AND IS 6 FEET WIDE

THE LAND COLOURED GREEN
IS APPROPRIATED OR SET
APART FOR EASEMENTS OF
DRAINAGE AND SEWERAGE

THE LAND COLOURED BROWN
IS APPROPRIATED OR SET
APART FOR EASEMENTS OF
WAY AND DRAINAGE

APPURTENANCIES

THE LAND COLOURED YELLOW IS AN
APPURTENANT EASEMENT VIDE
CIT. V. 7317 F.325 & V.7481 F.153

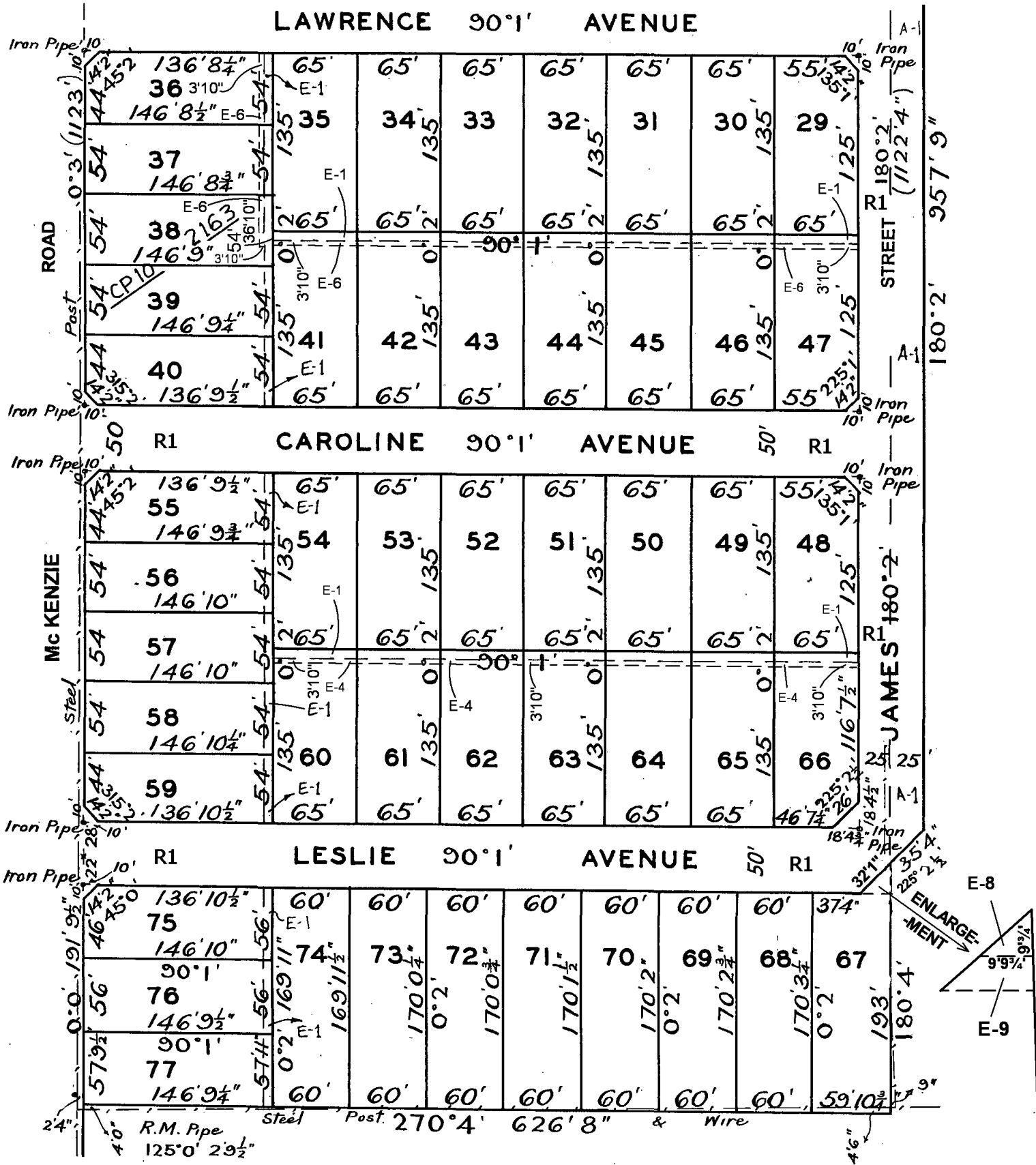


SEE SHEET 2

2 SHEETS
SHEET 1

LP 33819

SEE SHEET 1



2 SHEETS SHEET 2

