



Imaged Document Cover Sheet

The document following this cover sheet is an imaged document supplied by LANDATA®, Victorian Land Registry Services.

Document Type	Plan
Document Identification	LP010678
Number of Pages (excluding this cover sheet)	8
Document Assembled	10/09/2020 05:38

Copyright and disclaimer notice:

© State of Victoria. This publication is copyright. No part may be reproduced by any process except in accordance with the provisions of the Copyright Act 1968 (Cth) and for the purposes of Section 32 of the Sale of Land Act 1962 or pursuant to a written agreement. The information is only valid at the time and in the form obtained from the LANDATA® System. None of the State of Victoria, LANDATA®, Victorian Land Registry Services Pty. Ltd. ABN 86 627 986 396 as trustee for the Victorian Land Registry Services Trust ABN 83 206 746 897 accept responsibility for any subsequent release, publication or reproduction of the information.

The document is invalid if this cover sheet is removed or altered.

LP 10678

7 SHEETS
SHEET 2



LAVINGTON STREET												
E-2 88°35' E-2												
100	104-8	100	100	100	100	100	100	100	100	100	100	287-2
E-2	1	2	3	4	5	6	7	8	9	10	11	12
	0.18	0.16	0.16	0.16	0.16	0.16	0.16	0.16	0.16	0.16	0.16	0.16
	287-2	L.P. 3 0 0 8 7										287-2
100	104-8	100	100	100	100	100	100	100	100	100	100	100
E-2 88°35' E-2												
25	104-8	100	100	100	100	100	100	100	100	100	100	25
	44	43	42	41	40	39	38	37	36	35	34	33
	0.18	0.16	0.16	0.16	0.16	0.16	0.16	0.16	0.16	0.16	0.16	0.16
	287-2	L.P. 3 0 0 8 7										287-2
100	104-8	100	100	100	100	100	100	100	100	100	100	100
PARK STREET												
E-2 88°35' E-2												
76	104-8	100	100	100	100	100	100	100	100	100	100	76
	45	46	47	48	49	50	51	52	53	54	55	56
	0.18	0.16	0.16	0.16	0.16	0.16	0.16	0.16	0.16	0.16	0.16	0.16
	287-2	L.P. 3 0 0 8 7										287-2
100	104-8	100	100	100	100	100	100	100	100	100	100	100
E-2 88°35' E-2												
35	104-8	100	100	100	100	100	100	100	100	100	100	35
	85	84	83	82	81	80	79	78	77	76	75	74
	0.17	0.15	0.15	0.16	0.16	0.16	0.16	0.16	0.16	0.16	0.16	0.16
	284	284-2	284-4	284-7	285	285-2	285-5	285-8	286-1	286-4	286-7	287-2
	104-8	100	100	100	100	100	100	100	100	100	100	100
E-2 88°44' E-2												
100	104-8	100	100	100	100	100	100	100	100	100	100	100
	86	87	88	89	90	91	92	93	94	95	96	97

SEE SHEET 1

SEE SHEET 3

SEE SHEET 2

HALFORD STREET

88'44"

104-8 86 216.6 RP.13089 0.0.36	100 87 0.0.35	100 88 0.0.35	100 89 0.0.35	100 90 0.0.35	100 91 0.0.35	100 92 0.0.35	100 93 0.0.35	100 94 0.0.35	100 95 0.0.35	100 96 0.0.35	100 97 0.0.35	100 98 0.0.35
104-8 109 216.6 E-1 0.0.36	100 108 0.0.35	100 107 0.0.35	100 106 0.0.35	100 105 0.0.35	100 104 0.0.35	100 103 0.0.35	100 102 0.0.35	100 101 0.0.35	100 100 0.0.35	100 99 0.0.35	100 98 0.0.35	100 97 0.0.35

VIEW

88'44"

104-8 110 216.6 E-1 0.0.36	100 111 0.0.35	100 112 0.0.35	100 113 0.0.35	100 114 0.0.35	100 115 0.0.35	100 116 0.0.35	100 117 0.0.35	100 118 0.0.35	100 119 0.0.35	100 120 0.0.35	100 121 0.0.35	100 122 0.0.35
104-8 133 216.6 E-1 0.0.36	100 132 0.0.35	100 131 0.0.35	100 130 0.0.35	100 129 0.0.35	100 128 0.0.35	100 127 0.0.35	100 126 0.0.35	100 125 0.0.35	100 124 0.0.35	100 123 0.0.35	100 122 0.0.35	100 121 0.0.35

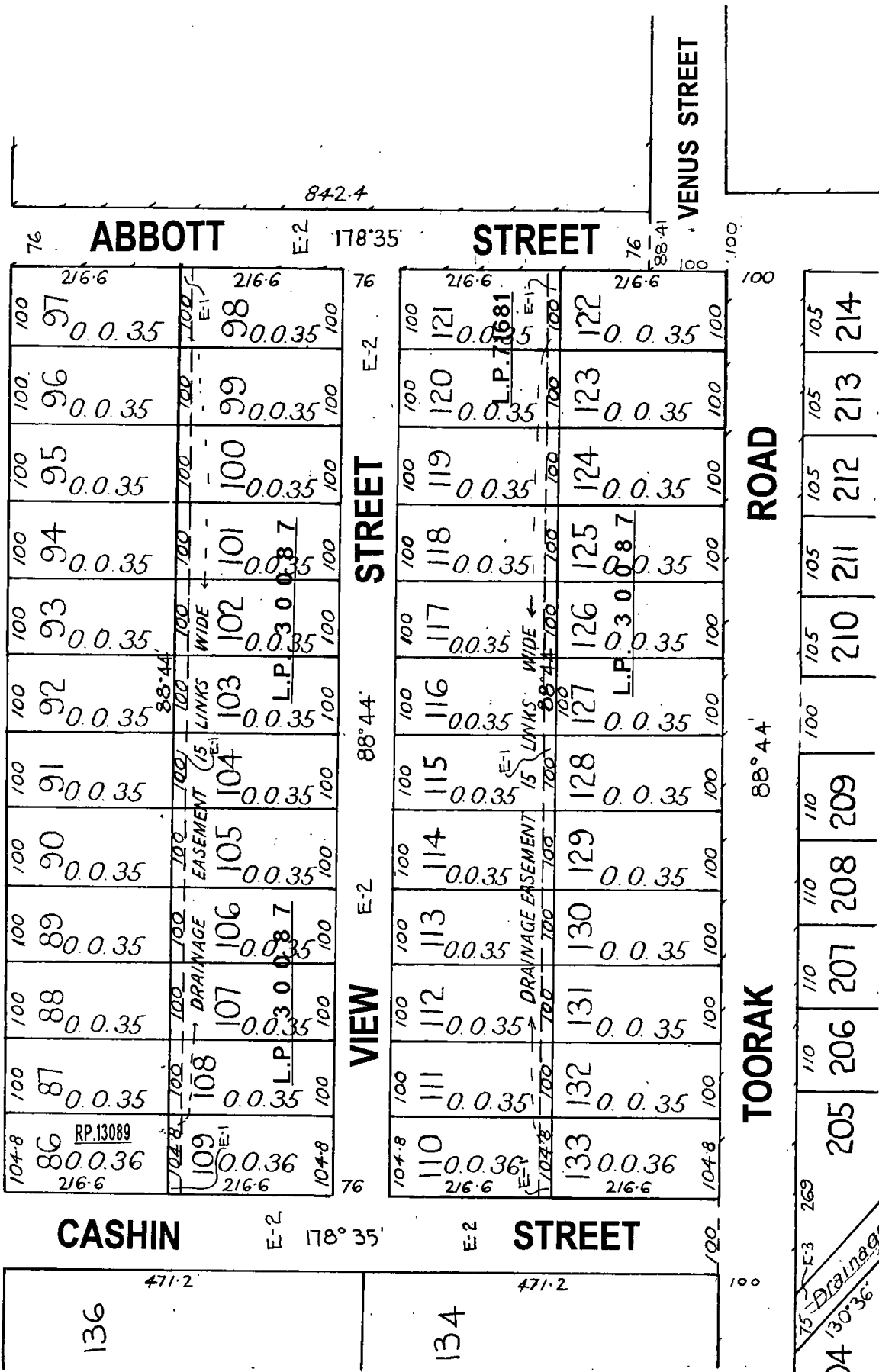
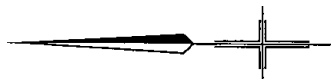
TOORAK ROAD

88'44"

204 130'36"	110 205	110 206	110 207	110 208	110 209	100 210	105 211	105 212	105 213	105 214
----------------	------------	------------	------------	------------	------------	------------	------------	------------	------------	------------

SEE SHEET 7

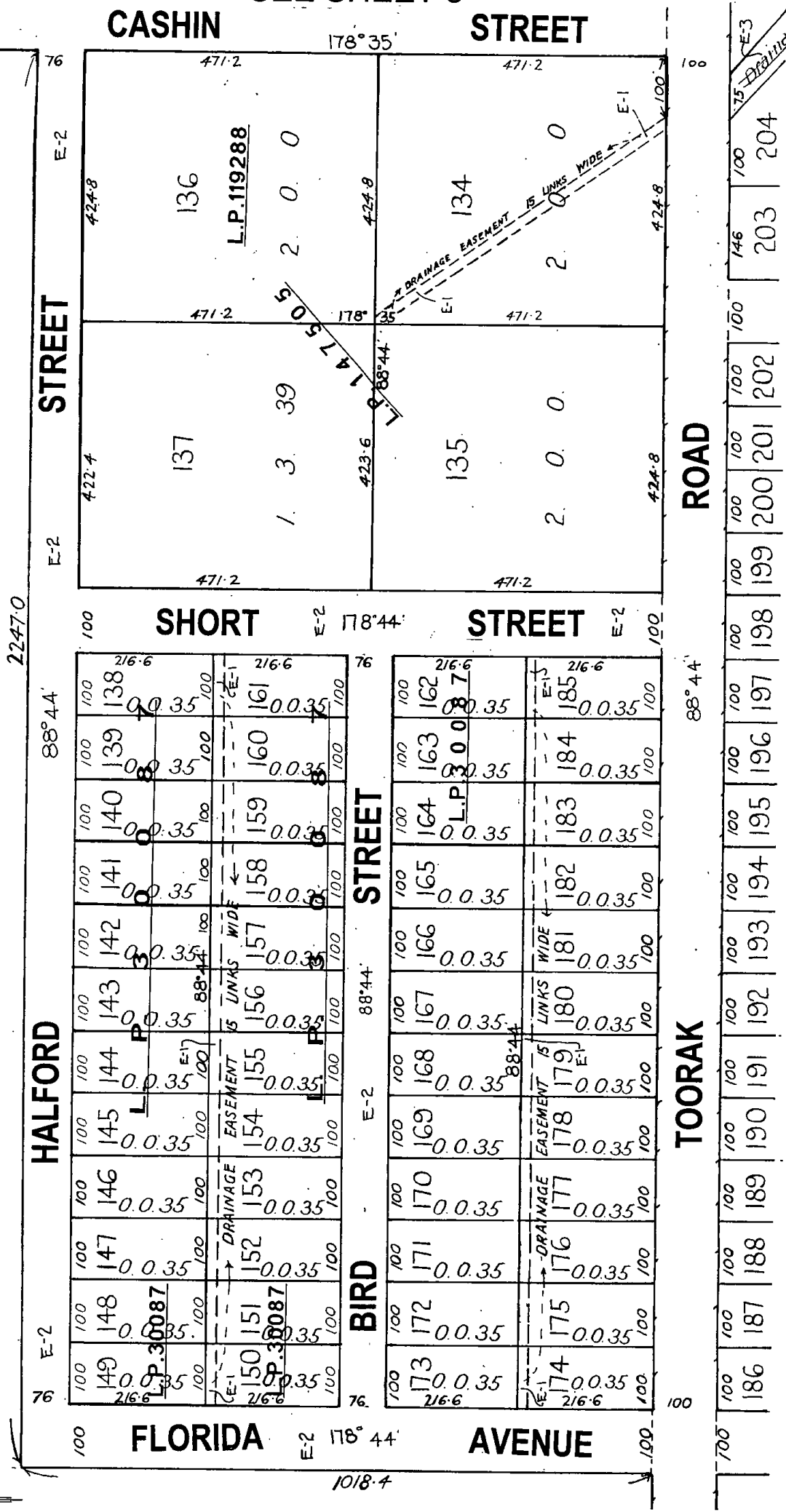
SEE SHEET 4



LP 10678

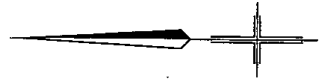
7 SHEETS
SHEET 4

SEE SHEET 3



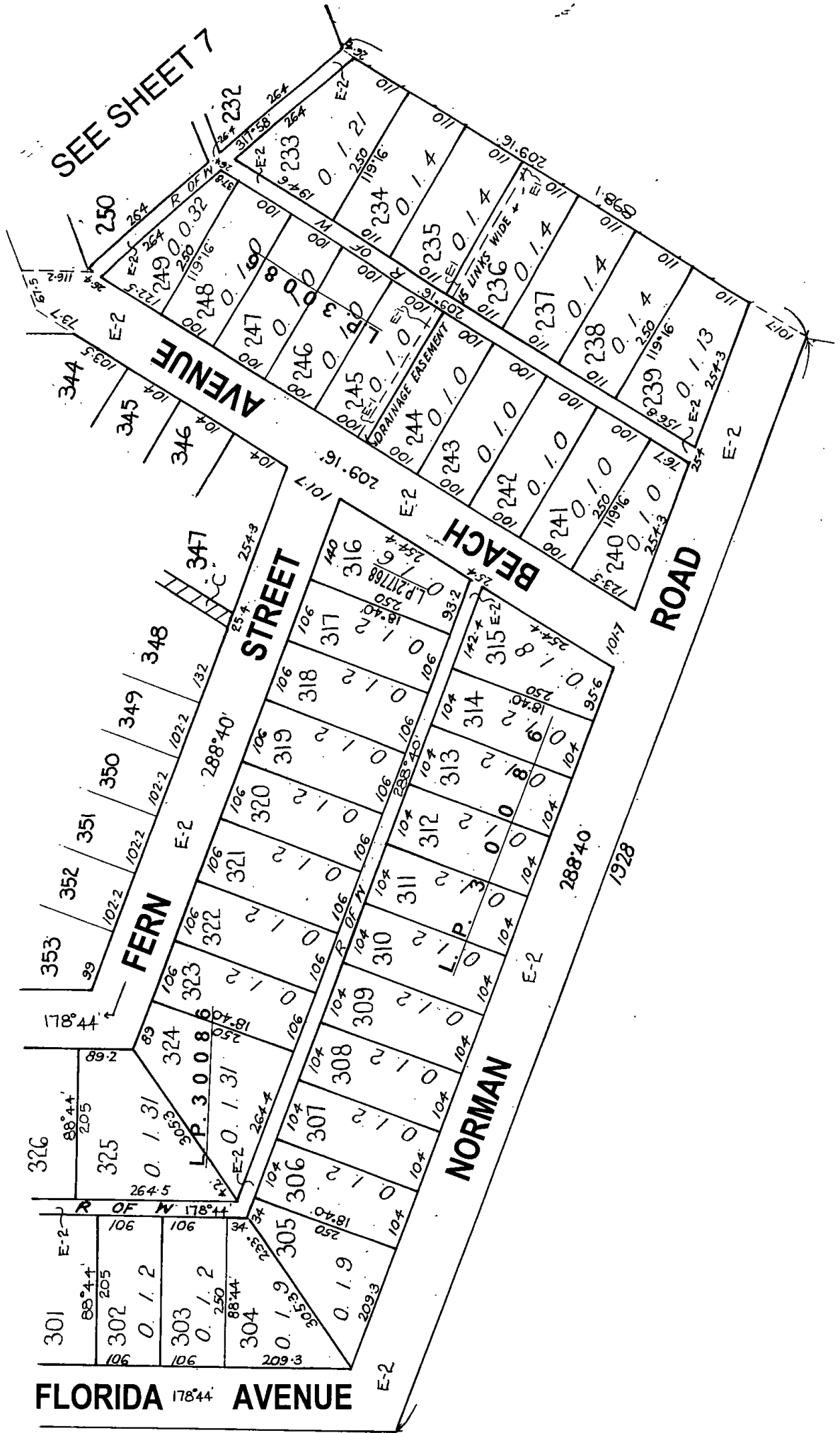
SEE SHEET 7

SEE SHEET 5

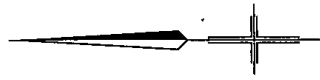


SEE SHEET 7

SEE SHEET 5



FLORIDA AVENUE



MODIFICATION TABLE

RECORD OF ALL ADDITIONS OR CHANGES TO THE PLAN

PLAN NUMBER
LP 10678

AFFECTED LAND / PARCEL	LAND / PARCEL / IDENTIFIER CREATED	MODIFICATION	DEALING NUMBER	DATE	TIME	EDITION NUMBER	ASSISTANT REGISTRAR OF TITLES
"A"		ROAD DISCONTINUED	L.G.D.4149			1	
"B"		ROAD DISCONTINUED	W601499A			1	
"C"		ROAD DISCONTINUED	L.G.D.3020			1	
"D"		ROAD DISCONTINUED	L.G.D.5534			1	
"E"		ROAD DISCONTINUED	L.G.D.3026			1	
		STREET NAME AMENDED	CORR.67/20436			1	
		STREET NAME AMENDED	GAZ.1974 P.3912			1	
"F"		ROAD DISCONTINUED	AB842741D	24/03/03		2	M.B.
LOT 68		REMOVAL OF EASEMENT	PS443062F	01/04/2003		3	IRM
		WARNING: THE IMAGE OF THIS PLAN/DOCUMENT HAS BEEN DIGITALLY AMENDED. NO FURTHER AMENDMENTS ARE TO BE MADE TO THE ORIGINAL PLAN/DOCUMENT.					
THIS PLAN		APPURTENANCIES ENHANCED				4	MLB
ROAD R1	E-4	EASEMENTS ENHANCED				5	AD